



# SUSTAINING THE FUTURE: ROYALTIES ON CLEAN-ENERGY METALS

SEPTEMBER 2024 CORPORATE PRESENTATION

ELECTRICROYALTIES.COM

TSX.V | ELEC



OTCQB | ELECF

# FORWARD-LOOKING STATEMENT

This presentation contains confidential and proprietary information belonging to Electric Royalties Ltd. ("Electric Royalties" or the "Company"). The recipient may not photocopy or otherwise reproduce this document or disclose its contents to anyone other than its authorized representatives without Electric Royalties' prior written consent. This presentation includes forward-looking information and forward-looking statements (collectively, "forward-looking information") with respect to the Company. This presentation includes information regarding other companies including projects owned by such other companies in which the Company holds a royalty interest based on previously disclosed public information disclosed by those companies and the Company is not responsible for the accuracy of that information, and that all information provided herein is subject to this Disclaimer and Forward Looking Statement cautionary statement. Any statements that express or involve discussions with respect to predictions, expectations, beliefs, plans, projections, objectives, assumptions or future events or performance (often, but not always, using words or phrases including, but not limited to, "expects", "does not expect", "is expected", "anticipates", "does not anticipate", "plans", "estimates", "believes", "does not believe" or "intends", or stating that certain actions, events or results may, could, would, might or will be taken, occur or be achieved) are not statements of historical fact and may be "forward-looking information". This information represents predictions and actual events or results may differ materially. Forward-looking information may relate to the Company's future outlook and anticipated events or results and may include statements regarding the Company's financial results, future financial position, expected growth of cash flows, business strategy, budgets, projected costs, projected capital expenditures, taxes, plans, objectives, industry trends and growth opportunities and those relating to projects owned by other companies in which the Company holds a royalty interest. Forward-looking information contained in this presentation is based on certain assumptions regarding expected growth, results of operations, performance, industry trends and growth opportunities. While management considers these assumptions to be reasonable, based on information available, they may prove to be incorrect. Forward-looking statements involve known and unknown risks, uncertainties and other factors which may cause the actual results, performance or achievements of the Company and other companies that own projects in which the Company holds a royalty interest to be materially different from any future results, performance or achievements expressed or implied by the forward-looking statements. These risks, uncertainties and other factors include, but are not limited to risks associated with general economic conditions; adverse industry events; marketing costs; loss of markets; future legislative and regulatory developments involving the mining, automotive and renewable energy industries; inability to access sufficient capital from internal and external sources, and/or inability to access sufficient capital on favorable terms; the mining, automotive and renewable energy industries generally, income tax and regulatory matters; the ability of the Company and other companies that own projects in which the Company holds a royalty interest to implement its business strategies including expansion plans; competition; currency and interest rate fluctuations, general economic and business conditions. The foregoing factors are not intended to be exhaustive. Although the Company has attempted to identify important factors that could cause actual actions, events or results to differ materially from those described in forward-looking statements, there may be other factors that cause actions, events or results to differ from those anticipated, estimated or intended. Forward-looking statements contained herein are made as of the date hereof and the Company and its directors, officers and employees disclaim any obligation to update any forward-looking statements, whether as a result of new information, future events or results or otherwise. There can be no assurance that forward-looking statements will prove to be accurate, as actual results and future events could differ materially from those anticipated in such statements. For further information, investors should review the Company's filings that are available at [www.sedarplus.ca](http://www.sedarplus.ca).

All forward-looking information is expressly qualified in its entirety by this cautionary statement. Forward-looking information and other information contained herein concerning management's general expectations concerning the mining, automotive and renewable energy industries are based on estimates prepared by management using data from publicly available industry sources as well as from market research and industry analysis and on assumptions based on data and knowledge of this industry which management believes to be reasonable. However, this data is inherently imprecise, although generally indicative of relative market positions, market shares and performance characteristics. While management is not aware of any misstatements regarding any industry data or comparables presented herein, industry data and comparables are subject to change based on various factors. The Company has not independently verified any of this data from independent third party sources.

## Cautionary Note to U.S. Investors Concerning Resource and Reserve Estimates

The mineral resources and mineral reserves disclosed in this presentation have been estimated in accordance with Canadian National Instrument 43-101 – Standards of Disclosure for Mineral Projects ("NI 43-101"), as required by Canadian securities regulatory authorities. The Company is not subject to the reporting requirements of section 13(a) of section 15(d) of the United States Securities Exchange Act of 1934, as amended (the "Exchange Act"), the Company's U.S. investors should be aware that the SEC adopted amendments to its disclosure requirements for issuers whose securities are registered with the SEC (the "SEC Modernization Rules"). The SEC Modernization Rules include the adoption of definitions of resources and reserves and their various categories which are "substantially similar" to the corresponding terms under the Definition Standards developed by the Canadian Institute of Mining and Metallurgy ("CIM Definition Standards") as required under NI 43-101. Accordingly, there is no assurance any resources and reserves that we may report as "measured mineral resources", "indicated mineral resources" and "inferred mineral resources" and "proven mineral reserves" and "probable mineral reserves" under NI 43-101 would be the same had we prepared these estimates under the standards adopted under the SEC Modernization Rules. Inferred Resources have a great amount of uncertainty as to their economic and legal feasibility. Under Canadian rules, estimates of Inferred Resources may not form the basis of feasibility or pre-feasibility studies, or economic studies except for a Preliminary Economic Assessment as defined under NI 43-101. For the above reasons, information contained in this presentation containing descriptions of the mineral deposits on the properties in which we hold royalty interests may not be comparable to similar information made public by United States companies subject to the reporting and disclosure requirements under the United States federal securities laws and the rules and regulations thereunder.

Technical information contained in this presentation has been reviewed and approved by David Gaunt, PGeo, a qualified person that is not independent of Electric Royalties Ltd.

This information is not intended to be and should not be construed in any way as part of an offering or solicitation of securities. No securities commission or other regulatory authority in Canada, the United States or any other country or jurisdiction has in any way passed upon the information contained in these pages. Although the Company believes the facts and information contained in the pages of this presentation to be correct and attempts to keep this information as current as possible, the Company does not warrant or make any representations as to the accuracy, validity or completeness of any facts or information contained in these pages. Unless otherwise specified, no user has permission to copy, redistribute, reproduce or republish, in any form, any information found in the pages of this presentation. Any user who, without authorization, re-transmits, copies or modifies any trademarks may violate federal or common law trademark and/or copywriter law, and may be subject to legal action.



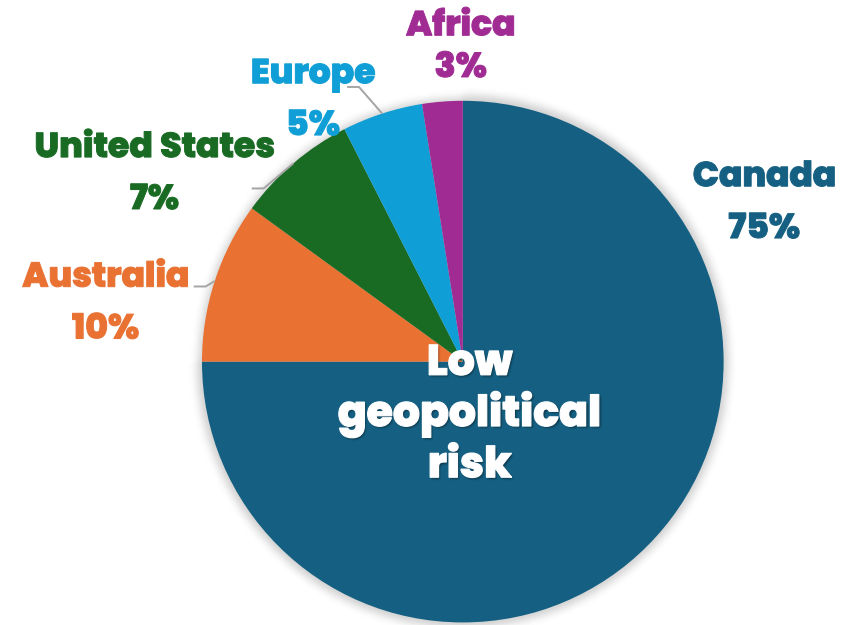
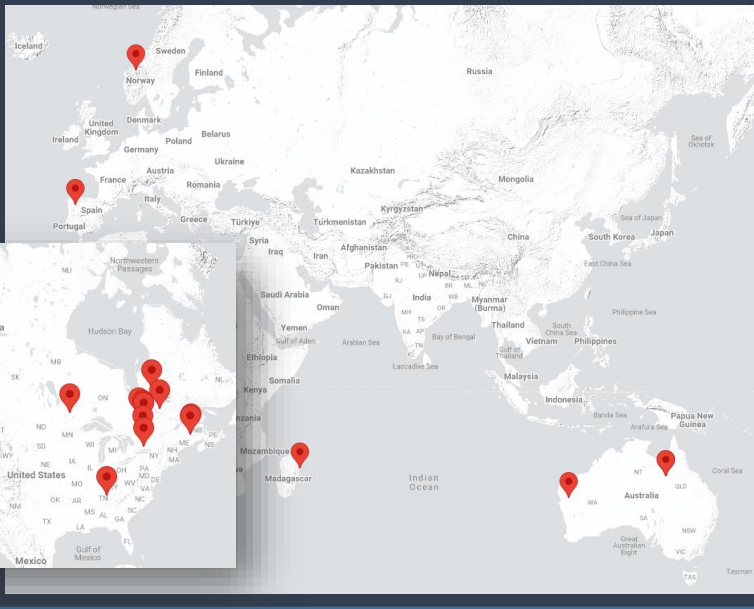
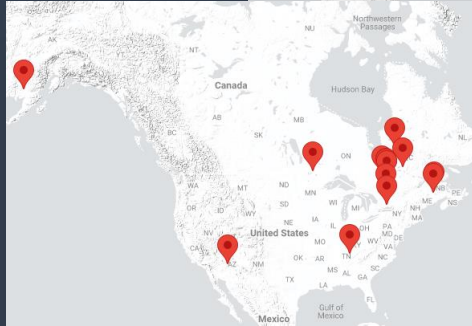
# WHY INVEST IN ELECTRIC ROYALTIES?

— Gain exposure to a growing portfolio of royalties on **metals required for the drive to sustainable electrification:**

COBALT	COPPER	GRAPHITE
LITHIUM	MANGANESE	NICKEL
TIN	VANADIUM	ZINC

- **Exponential growth forecast in demand for clean energy metals**
- Management team with **proven track record in creating value for shareholders**
- **Revenue-generating** royalty portfolio





## COMPANY OVERVIEW

CASH & DEBT POSITION <sup>1</sup>	CASH & CASH EQUIVALENTS	<b>C\$0.2M</b>
	DEBT	<b>C\$6.95M</b> (UNDRAWN LOAN FACILITY C\$3.05M)
SHARE STRUCTURE <sup>1</sup>	MARKET CAPITALIZATION	<b>C\$20M</b>
	SHARES OUTSTANDING	<b>101,604,729</b>
	OPTIONS	<b>8,631,000</b>
	WARRANTS	<b>17,000,000</b>
	FULLY DILUTED	<b>127,235,729</b>

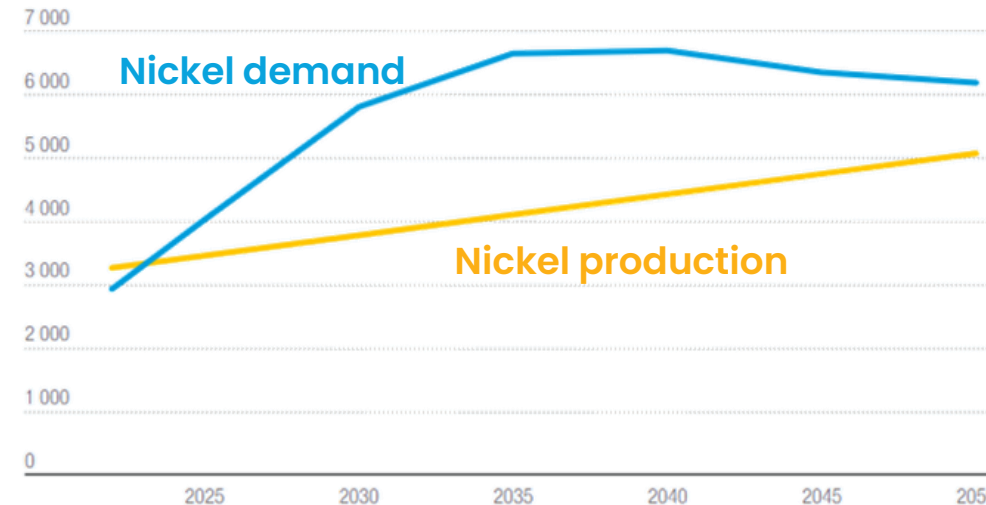
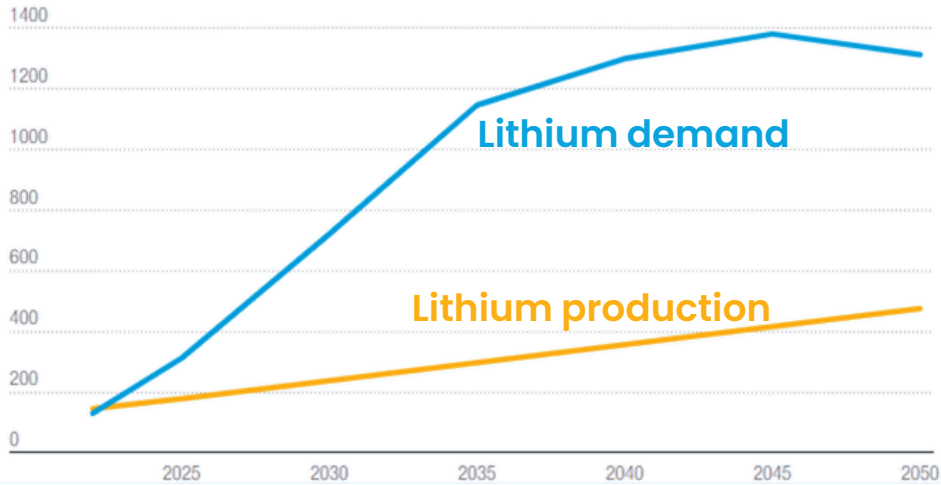
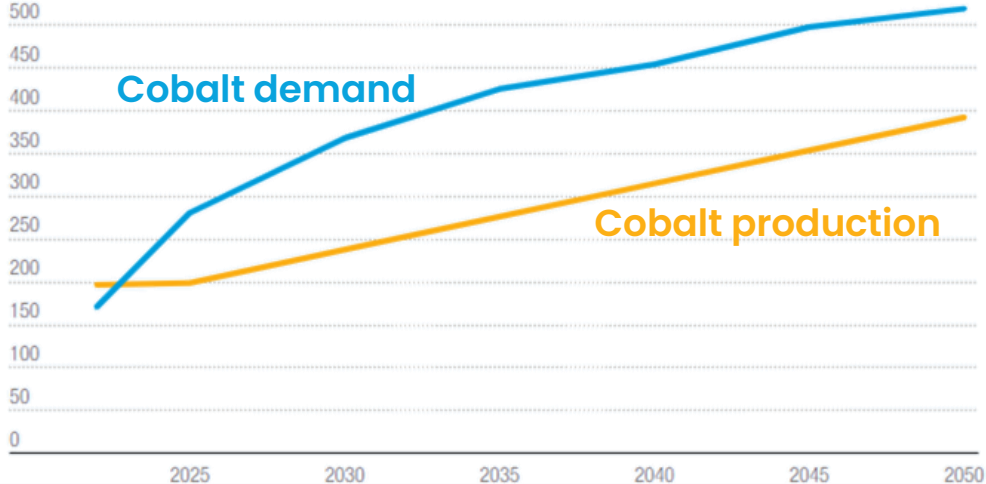
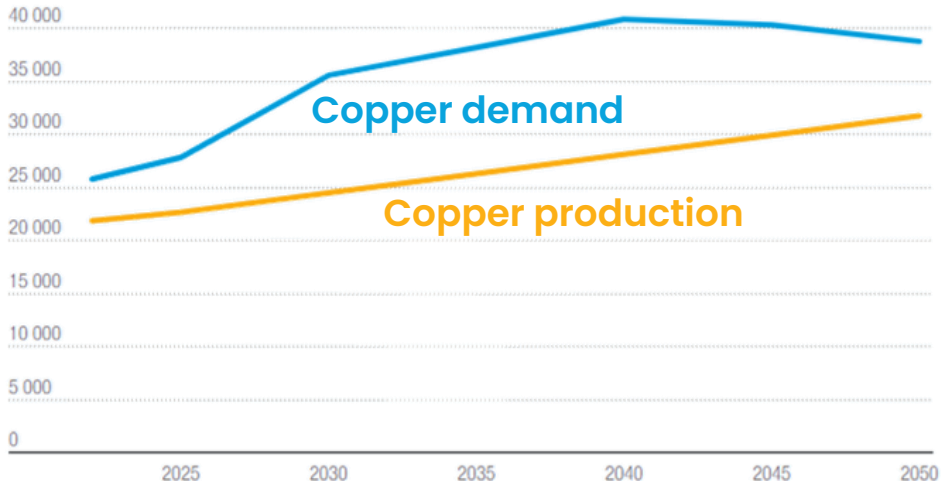
**40** TOTAL ROYALTIES ACROSS **9**  
CLEAN ENERGY METALS PLUS **29**  
OPTIONED PROPERTIES<sup>1</sup> THAT COULD BE  
CONVERTED INTO ROYALTIES<sup>2</sup>

**FOCUS ON LONG-LIFE ASSETS  
WITH EXPLORATION UPSIDE & POTENTIAL  
NEAR-TERM PRODUCTION**



# RISING DEMAND FOR CLEAN ENERGY METALS WILL TIGHTEN MARKET

World mine production and demand of lithium, cobalt, nickel and copper in metric tons, 2022–2050



Source: UN Trade and Development based on data from IEA and USGS <https://unctad.org/news/critical-minerals-boom-global-energy-shift-brings-opportunities-and-risks-developing-countries>



# WE ARE INVESTED IN THE MAJORITY OF KEY METALS REQUIRED TO MANUFACTURE ELECTRIC VEHICLES, THEIR BATTERIES AND CHARGING STATIONS

## **Cu** Copper

An essential component used in motor wiring, radiator, connectors, brakes and bearings. Increases battery life and energy density.



## **Sn** Tin

Used in soldering electrical components

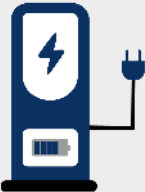
## **Zn** Zinc

Galvanized steel requires zinc and is the preferred material used by EV manufacturers. The average EV requires 0.2 tonnes of steel.



- Li** Lithium
- Mn** Manganese
- Co** Cobalt
- C** Graphite
- Ni** Nickel
- Cu** Copper

Rich metal-oxide batteries emit no tailpipe pollutants, reducing local air pollution



## **V** Vanadium

Vanadium flow batteries can be used as energy storage to provide EV charging

Source: International Council on Mining & Metals & Teck. Adapted from BT Graphics



# ROYALTY COMPANY ADVANTAGES

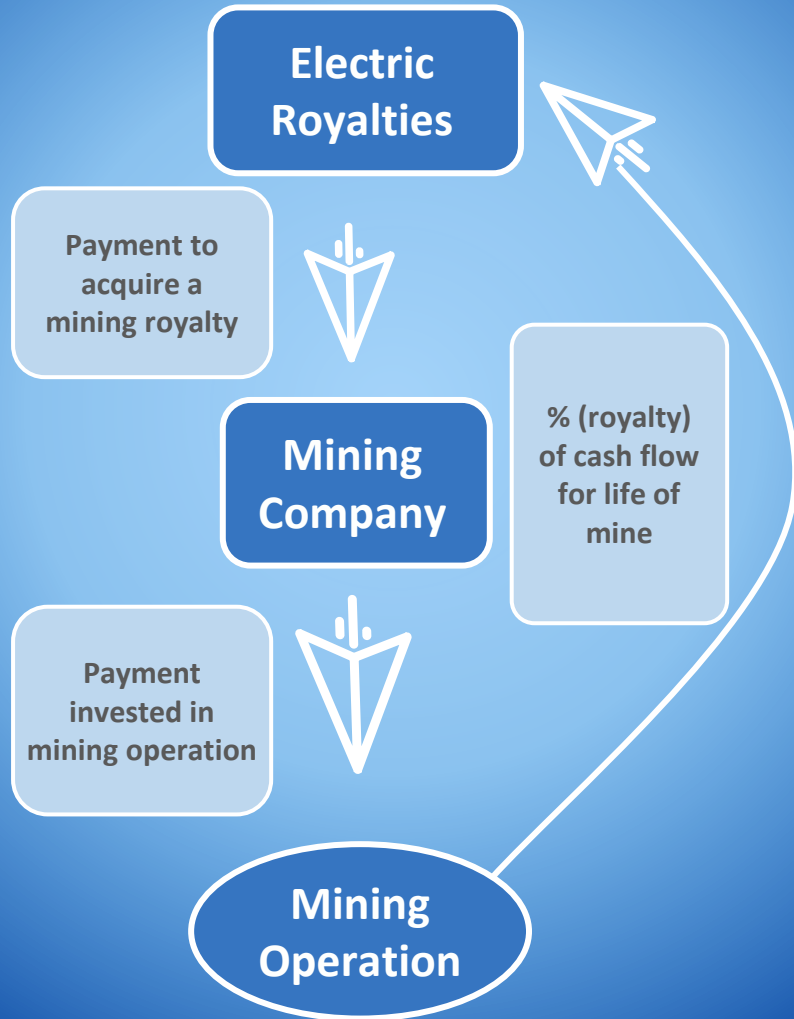
- ⚡ The royalty/streaming business model has been **proven to outperform mining companies** (e.g. Franco Nevada, Wheaton Precious Metals)
- ⚡ Royalty companies do not operate mines nor need large and highly specialized teams to carry on their regular course of business
- ⚡ **Diversifies investments and mitigates risk**
- ⚡ Royalties are generally registered against mineral title
- ⚡ **Lower risk** – royalties are typically based on revenues and paid irrespective of underlying profitability, with no further capital outlay required

COMPETITIVE ADVANTAGES	MINING COMPANY	ROYALTY COMPANY
⚡ Leverage to commodity prices	✔	✔
⚡ Exploration upside	✔	✔
⚡ Production rate upside	✔	✔
⚡ No capital expense overruns		✔
⚡ No sustaining costs		✔
⚡ No exploration costs		✔
⚡ Fixed cash costs forever		✔
⚡ Average revenue per employee	\$300k	\$20 million
⚡ Valuation multiple FCF	6x	21.6x <sup>1</sup>

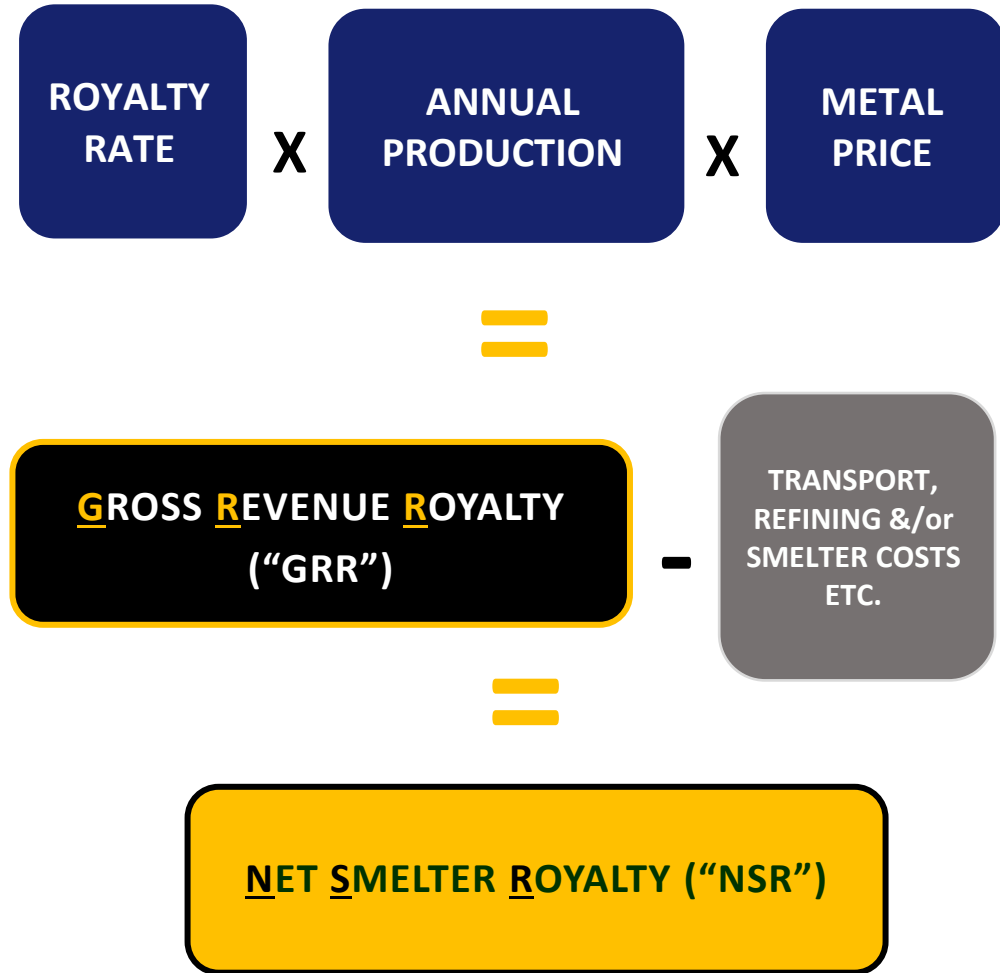
1. Scotiabank: Monthly Streaming and Royalty Recap (May 2021)



# THE PROCESS OF ACQUIRING ROYALTIES



# ESTIMATING ANNUAL ROYALTY CASH FLOW





# ELECTRIC ROYALTIES TO ACQUIRE FIRST CASH-FLOWING COPPER STREAM FROM MINERA COBRE VERDE IN CHILE<sup>1</sup>

PROJECT **Minera Cobre Verde (MCV) Mine**

ELEC STREAM 76,000 pounds of copper monthly at a fixed price of US\$2.75/pound over four years

LOCATION Antofagasta Region of Chile

STAGE Producing

OPERATOR Minera Cobre Verde, a subsidiary of Cobre y Metales

- The stream will be cash-settled.
- Opportunity to increase the stream by an additional 76,000 pounds of copper monthly.
- Minera Cobre Verde management has experience buying production material from multiple local sources to lower risk.
- Closing is subject to completion of due diligence, securing necessary financing, and approval of the TSX Venture Exchange and other customary conditions.



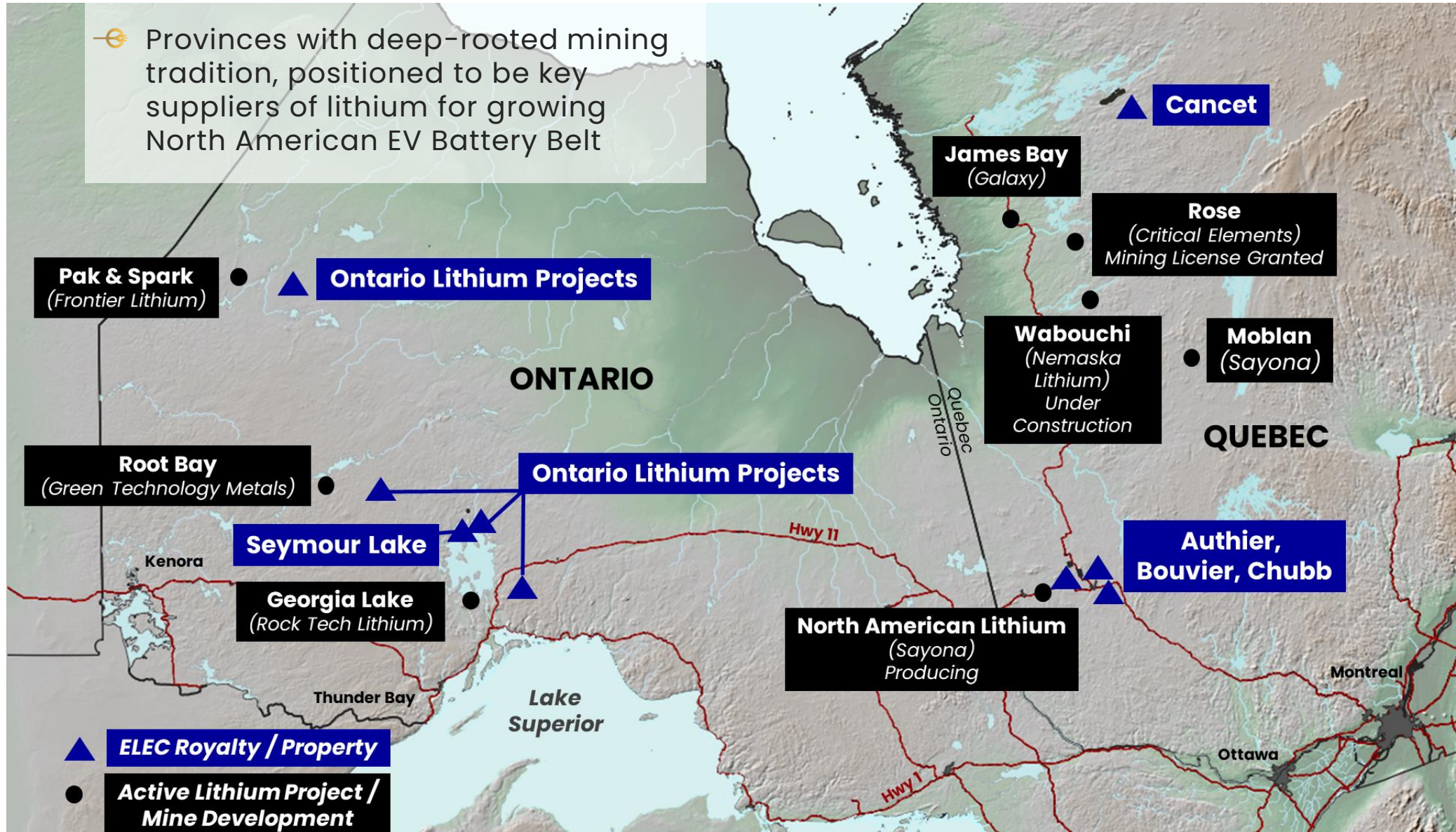
MCV copper cathode production milestone, June 2024.  
Source: Cobre y Metales LinkedIn post.

1. Electric Royalties news release dated September 18, 2024.



# LITHIUM PORTFOLIO STRATEGICALLY LOCATED IN ONTARIO AND QUÉBEC

📍 Provinces with deep-rooted mining tradition, positioned to be key suppliers of lithium for growing North American EV Battery Belt



# LITHIUM PRE-PRODUCTION

PROJECT **Authier**

ELEC ROYALTY 0.5% Gross Metal Royalty on part of Authier

LOCATION Quebec, Canada

STAGE Feasibility study complete for North American Lithium (NAL)

OPERATOR Sayona Mining SYA | ASX

- In April 2023, Sayona announced a feasibility study that combines its Québec flagship North American Lithium (NAL) operation and the nearby Authier Lithium Project.
- Production at NAL commenced in March 2023. Production at Authier planned.
- Sayona raised A\$190 million in May 2022 to advance NAL to production and develop Authier.



# ZINC PRODUCTION

- ⚡ Zinc plays a critical role in batteries, energy storage and protection of steel used to build renewable energy infrastructure

PROJECT	ROYALTY	OPERATOR	LOCATION
<b>Middle Tennessee Zinc Mine<sup>1</sup></b>	Sliding Scale Gross Mining Royalty above US\$0.90/lb Zn	Nyrstar / Trafigura	U.S.

- Production has occurred across a timespan of more than 45 years; currently paused.
- Project is comprised of two underground zinc mines, Gordonsville and Cumberland.
- Processing plant at Gordonsville mine plus nearby Clarksville smelter create an integrated mining complex.
- Large land package with significant resource potential.



1. Production paused in November 2023 due to market conditions and inflationary impacts on input costs and operating margins

# TIN PRODUCTION

- ⊖ The Penouta Mine was the largest tin and tantalum producer in Europe until production was paused in October 2023<sup>1,2</sup>
- ⊖ Tin’s unique properties of malleability and corrosion resistance make it essential to the connectivity of all things electric, including circuit boards, electric vehicles, photovoltaic cells and 5G infrastructure

PROJECT	ROYALTY	OPERATOR	LOCATION
<b>Penouta Mine</b>	1.5% Gross Revenue Royalty	Strategic Minerals Europe Corp.	Spain

- In 2023, Penouta produced a record 603 tonnes of primary concentrate, and achieved record sales of 629 tonnes of concentrates and 418 tonnes of contained minerals, which are 20% and 19% higher than in 2022, respectively<sup>3</sup>.
- Additional potential opportunities to add new revenue streams from high-grade feldspar and rare earths extraction from historical tailings.
- Long potential mine life based on total measured and indicated resources of 76.3 million tonnes<sup>4</sup>.



Penouta Mine.  
Source: Strategic Minerals Europe Corp.

1. Strategic Minerals Europe Corp. website <https://www.strategicminerals.com/what-we-do/#penouta-mine>
2. Production paused in October 2023 due to provisional suspension of section C permit. Strategic Minerals Europe Corp. has submitted an appeal of the suspension.
3. Strategic Minerals Europe Corp.’s financial statements and MD&A for the three months and full year ended December 31, 2023
4. Further information is available in a NI 43-101 technical report by SRK with effective date March 5, 2021 on the Strategic Minerals Europe Corp. profile at [www.sedarplus.ca](http://www.sedarplus.ca). M+I Resources are reported at grades of 443 ppm Sn, 73 ppm Ta and 89 ppm Ta2O5. Resources at an open pit cut-off grade of 60 ppm Ta2O5Eq, based on prices and recoveries of US\$178/kg and 75% for Ta2O5, and US\$24/kg and 75% for tin.

# PROJECT ACTIVITY<sup>1</sup>

## **BATTERY HILL**

### **MANGANESE**

Prefeasibility study work underway

## **MONT SORCIER**

### **VANADIUM**

Permitting, social license, and feasibility study work underway

## **ZONIA**

### **COPPER**

Announced expanded indicated resources in September 2024<sup>2</sup>; feasibility study targeted by Q4 2025

## **SEYMOUR LAKE**

### **LITHIUM**

Feasibility study targeted in H2 2024

## **GRAPHMADA**

### **GRAPHITE**

Updated Mineral Resource estimate in July 2022<sup>3</sup>; process commenced to seek strategic investment to restart mine with higher production volumes<sup>4</sup>

## **RÅNA**

### **NICKEL**

Ongoing drilling results under JV between Kingsrose Mining & Global Energy Metals

## **KENBRIDGE**

### **NICKEL-COPPER**

Advanced exploration phase, permitting and licensing work in 2024

## **BISSETT CREEK**

### **GRAPHITE**

Preliminary economic assessment complete – average annual production of ~42,000 tonnes at targeted full capacity<sup>5</sup>

1. Timeline is based on information from project owners.
2. World Copper Ltd. news release dated September 9, 2024. A technical report to support the Updated Resource Estimate for the Zonia Project, prepared in accordance with NI43-101, will be filed under World Copper's profile on [www.sedarplus.ca](http://www.sedarplus.ca) within 45 days of the September 9, 2024 news release.
3. Greenwing Resources Ltd. news release dated July 12, 2022, JORC Code 2012, Table 1. Both JORC and CIM are CRIRSCO members hence adhere to international resource reporting standards and adopt a similar approach to resource definition and classification. Differences between the two codes do exist in the requirements for QP site visits, technical reports and use of resource categories.
4. Greenwing Resources Ltd. news release dated April 30, 2024.
5. Technical report titled "Northern Graphite Corporation, Bissett Creek Project, Preliminary Economic Assessment" dated December 6, 2013.



# ROYALTY PORTFOLIO

(LISTED BY DEVELOPMENT STAGE)

#	ACQUIRED	PROJECT	MINERAL	DEVELOPMENT STAGE	ROYALTY <sup>1,2,3</sup>	LOCATION	OPERATOR	MARKET CAP C\$ <sup>4</sup>
1	2021	MIDDLE TENNESSEE ZINC MINE	Zinc	Producing (paused)	Sliding Scale Gross Mining Royalty above US\$0.90/lb Zn	United States	Nyrstar / Trafigura	Private
2	2022	PENOUTA MINE	Tin-Tantalum	Producing (paused)	1.5% GRR	Spain	Strategic Minerals Europe Corp	1M
3	2021	GRAPHMADA	Graphite	Engineering Studies – Restart	2.5% NSR	Madagascar	Greenwing Resources	10M
4	2020	AUTHIER	Lithium	Engineering Studies	0.5% GMR on part of Authier	Canada	Sayona Mining	248M
5	2020	BISSETT CREEK	Graphite	Preliminary Economic Assessment Complete	1.5% GRR	Canada	Northern Graphite	8M
6	2022	ZONIA	Copper	Preliminary Economic Assessment Complete	0.5% GRR & option to add 1% GRR on Zonia North	United States	World Copper	13M
7	2020	BATTERY HILL	Manganese	Preliminary Economic Assessment Complete	2% GMR	Canada	Manganese X Energy Corp	7M
8	2020	MONT SORCIER	Vanadium	Preliminary Economic Assessment Complete	1% GMR	Canada	Cerrado Gold	21M
9	2023	KENBRIDGE	Nickel-Copper	Preliminary Economic Assessment Complete	0.5% GRR & options to add 0.5% GRR on Kenbridge & 1% GRR on Kenbridge North	Canada	Tartisan Nickel	24M

**CONTINUED ON NEXT SLIDE**

1. GRR: Gross Revenue Royalty  
3. NSR: Net Smelter Royalty

2. GMR: Gross Metal Royalty  
4. As of September 19, 2024. September 19, 2024 exchange rates used for market cap conversions to CAD (<https://ca.finance.yahoo.com/>)



# ROYALTY PORTFOLIO

(LISTED BY DEVELOPMENT STAGE)

#	ACQUIRED	PROJECT	MINERAL	DEVELOPMENT STAGE	ROYALTY <sup>1,2,3</sup>	LOCATION	OPERATOR	MARKET CAP C\$ <sup>4</sup>
10	2021	SEYMOUR LAKE	Lithium	Feasibility Study Underway	1.5% NSR	Canada	Green Technology Metals	29M
11	2021	MILLENNIUM	Copper	Advanced Exploration	0.5% GRR	Australia	Metal Bank Limited	5M
12	2021	CANCET	Lithium	Advanced Exploration	1% NSR	Canada	Winsome Resources	93M
13	2021	RANA	Nickel	Advanced Exploration	1% NSR	Norway	Metals One Plc / Global Energy Metals / Kingsrose Mining	Private
14	2020	CHUBB	Lithium	Exploration	2% GMR	Canada	Burley Minerals	9M
15	2020	BOUVIER	Lithium	Exploration	2% GMR	Canada	Mining Equities Pty Ltd	Private
16	2020	SAYONA EAST	Lithium	Exploration	2% GMR	Canada	Sayona Mining	248M
17	2020	SAYONA WEST	Lithium	Exploration	0.5% GMR	Canada	Sayona Mining	248M
18	2021	GLASSVILLE	Manganese	Exploration	1% GRR	Canada	Globex Mining	48M
19	2022	SLEITAT	Tin-Silver	Exploration	1% NSR	United States	Cornish Metals	59M
20	2021	GRAPHITE BULL	Graphite	Exploration	0.75% GRR	Australia	Buxton Resources	12M
21	2021	MT. DOROTHY	Cobalt	Exploration	0.5% GRR	Australia	Hammer Metals	30M
22	2021	COBALT RIDGE	Cobalt	Exploration	0.5% GRR	Australia	Hammer Metals	30M

1. GRR: Gross Revenue Royalty  
3. NSR: Net Smelter Royalty

2. GMR: Gross Metal Royalty

4. As of September 19, 2024. September 19 exchange rates used for market cap conversions to CAD (<https://ca.finance.yahoo.com/>)





# ROYALTY PORTFOLIO

(LISTED BY DEVELOPMENT STAGE)

# ACQUIRED	PROJECT	MINERAL	DEVELOPMENT STAGE	ROYALTY <sup>1,2,3</sup>	LOCATION	OPERATOR	MARKET CAP C\$ <sup>4</sup>	
23	2024	ROGERS CREEK / MCCLUSKEY	Lithium	Exploration	1.5% NSR	Canada	Maple Minerals (acquired by Cohiba Minerals)	Private
24	2024	BIG ROCK / OTTERTAIL RIVER SW	Lithium	Exploration	1.5% NSR	Canada	Maple Minerals (acquired by Cohiba Minerals)	Private
25	2024	OTTERTAIL / OTTERTAIL RIVER NE / MAHAMO	Lithium	Exploration	1.5% NSR	Canada	Maple Minerals (acquired by Cohiba Minerals)	Private
26	2024	GATHERING LAKE	Lithium	Exploration	1.5% NSR	Canada	Maple Minerals (acquired by Cohiba Minerals)	Private
27	2024	COSGRAVE	Lithium	Exploration	1.5% NSR	Canada	FE Battery Metals	4M
28	2024	ALLISON LAKE	Lithium	Exploration	1.5% NSR	Canada	Musk Metals	0.9M
29	2024	JUBILEE, CAMPUS CREEK, CRESCENT	Lithium	Exploration	1.5% NSR	Canada	Electrification and Decarbonization AIE LP	Private
30	2024	ROOT BAY	Lithium	Exploration	1.5% NSR	Canada	Lithium Triangle Resources	Private
31	2024	BIRKETT	Lithium	Exploration	1.5% NSR	Canada	Portofino Resources	4M
32	2024	SEPARATION RAPIDS LITHIUM	Lithium	Exploration	1.0% NSR	Canada	Double O Seven Mining	Private
33	2024	ARREL	Lithium	Exploration	1.5% NSR	Canada	Private BC Company	Private
34	2024	OTATAKAN TOWNSHIP (50% OWNERSHIP)	Lithium	Exploration	3.0% NSR	Canada	Lithium One Metals	2M

1. GRR: Gross Revenue Royalty  
3. NSR: Net Smelter Royalty

2. GMR: Gross Metal Royalty

4. As of September 19, 2024. September 19, 2024 exchange rates used for market cap conversions to CAD (<https://ca.finance.yahoo.com/>)



# ROYALTY PORTFOLIO

(LISTED BY DEVELOPMENT STAGE)

# ACQUIRED	PROJECT	MINERAL	DEVELOPMENT STAGE	ROYALTY <sup>1,2,3</sup>	LOCATION	OPERATOR	MARKET CAP C\$ <sup>4</sup>
35 2024	LAURI	Lithium	Exploration	1.5% NSR	Canada	Fifty St George	Private
36 2024	KEMBER / PAKEAGEAMA	Lithium	Exploration	1.5% NSR	Canada	Sultan Resources	1M
37 2024	ALLISON LAKE / RUDDY	Lithium	Exploration	1.5% NSR	Canada	Sultan Resources	1M
38 2024	PEGGY LITHIUM	Lithium	Exploration	1.5% NSR	Canada	Lithos Minerals	Private
39 2024	MARGOT LITHIUM	Lithium	Exploration	1.5% NSR	Canada	Private BC Company	Private
40 2024	BARBARA LAKE	Lithium	Exploration	1.5% NSR	Canada	Private BC Company	Private

1. GRR: Gross Revenue Royalty  
3. NSR: Net Smelter Royalty

2. GMR: Gross Metal Royalty

4. As of September 19, 2024. September 19, 2024 exchange rates used for market cap conversions to CAD (<https://ca.finance.yahoo.com/>)



# DIRECTORS, OFFICERS & MANAGEMENT

## —⚡ CEO & DIRECTOR: **BRENDAN YURIK** [B.COM](http://B.COM)

Founder and CEO of Evenor Investments Ltd, a financial advisory group to junior mining companies for alternative financing, debt, equity and M&A with experience in over \$2 billion in mining financing transactions throughout his career. Prior global experience as a research analyst as well as in business development and mining financial advisory roles with Endeavour Financial, Cambrian Mining Finance Ltd, Northern Vertex Mining Corp. and King & Bay West Management Corp.

## —⚡ CHAIRMAN: **MARCHAND SNYMAN** [CA \(SA\)](#), [CA \(AUS & NZ\)](#)

Co-founder and Chairman of RE Royalties Ltd, a renewable energy royalty company, involved in the acquisition of over 100 royalties to date. Over 25 years' senior executive experience in corporate finance and mining with a global merger, financing, acquisition and divestiture track record of more than 50 transactions.

## —⚡ DIRECTOR: **ROBERT SCHAFFER** [P.GEO](#)

Director of International Royalty Corp (sold for \$800m to Royal Gold). More than 30 years of experience working internationally in business development roles with major and junior mining companies including formerly representing as Chairman of PDAC. Serves as a director of a number of public resource companies.

## —⚡ DIRECTOR: **CRAIG LINDSAY** [MBA, CFA](#)

30 years' experience in corporate finance, investment banking, and business development. Managing Director of Arbutus Grove Capital Corp. and CEO of Lonestar Lithium Ltd. Most recently the Founder, President, and CEO of Otis Gold Corp. until its sale to Excellon Resources Inc. in April 2020. Currently a Director of Revolve Renewable Power Ltd., Excellon Resources Inc., VR Resources Ltd. and Silver North Resources Ltd.

## —⚡ DIRECTOR: **STEFAN GLEASON**

President & CEO of Money Metals Exchange LLC, one of the largest precious metals dealers and depositories in North America with over C\$1 billion in annual revenues. Managing Director of Gleason & Sons LLC, a limited liability company which holds and manages debt, equity, and real estate investments. Published by the Wall Street Journal, Newsweek, Mining.com, TheStreet, and others.

## —⚡ CFO: **LUQMAN KHAN** [CPA, CGA](#)

CFO of RE Royalties Ltd, a renewable energy royalty company, involved in the acquisition of over 100 royalties to date. Financial reporting executive with over 20 years of professional experience in accountancy and business management. Served as CFO for several publicly listed TSX-V resource companies and previously with Ernst and Young in their assurance practice.

## —⚡ CHIEF GEOSCIENTIST **DAVID GAUNT** [P.GEO](#)

An economic geologist specializing in project assessment and resource estimation. His experience spans projects worldwide and includes roles with senior mining companies and junior exploration companies. Co-recipient of the PDAC's Thayer Lindsley International Discovery Award.



# A HIGH-VALUE GROWTH AND INCOME INVESTMENT OPPORTUNITY

- ✓ Increasing electric vehicle and battery production is set to **drastically increase demand growth across electric metals over the next decade**
- ✓ Targeting **long-term recurring and diversified royalty cash flows** with no ongoing holding costs
- ✓ Royalty companies have been shown to **outperform investing directly in operating mining companies** and the underlying commodities associated with them
- ✓ **Experienced management team and board to drive the company forward**, including experienced royalty executives, geologists, engineers and mining financiers



TSX.V | ELEC  
OTCQB | ELECF



## CONTACT

### BRENDAN YURIK (CEO)

✉ [BRENDAN.YURIK@ELECTRICROYALTIES.COM](mailto:BRENDAN.YURIK@ELECTRICROYALTIES.COM)

📱 +1.604.364.3540

### GENERAL ENQUIRIES

✉ [INFO@ELECTRICROYALTIES.COM](mailto:INFO@ELECTRICROYALTIES.COM)

📱 +1.604.639.9200

1400 – 1040 WEST GEORGIA STREET  
VANCOUVER, B.C. V6E 4H1, CANADA

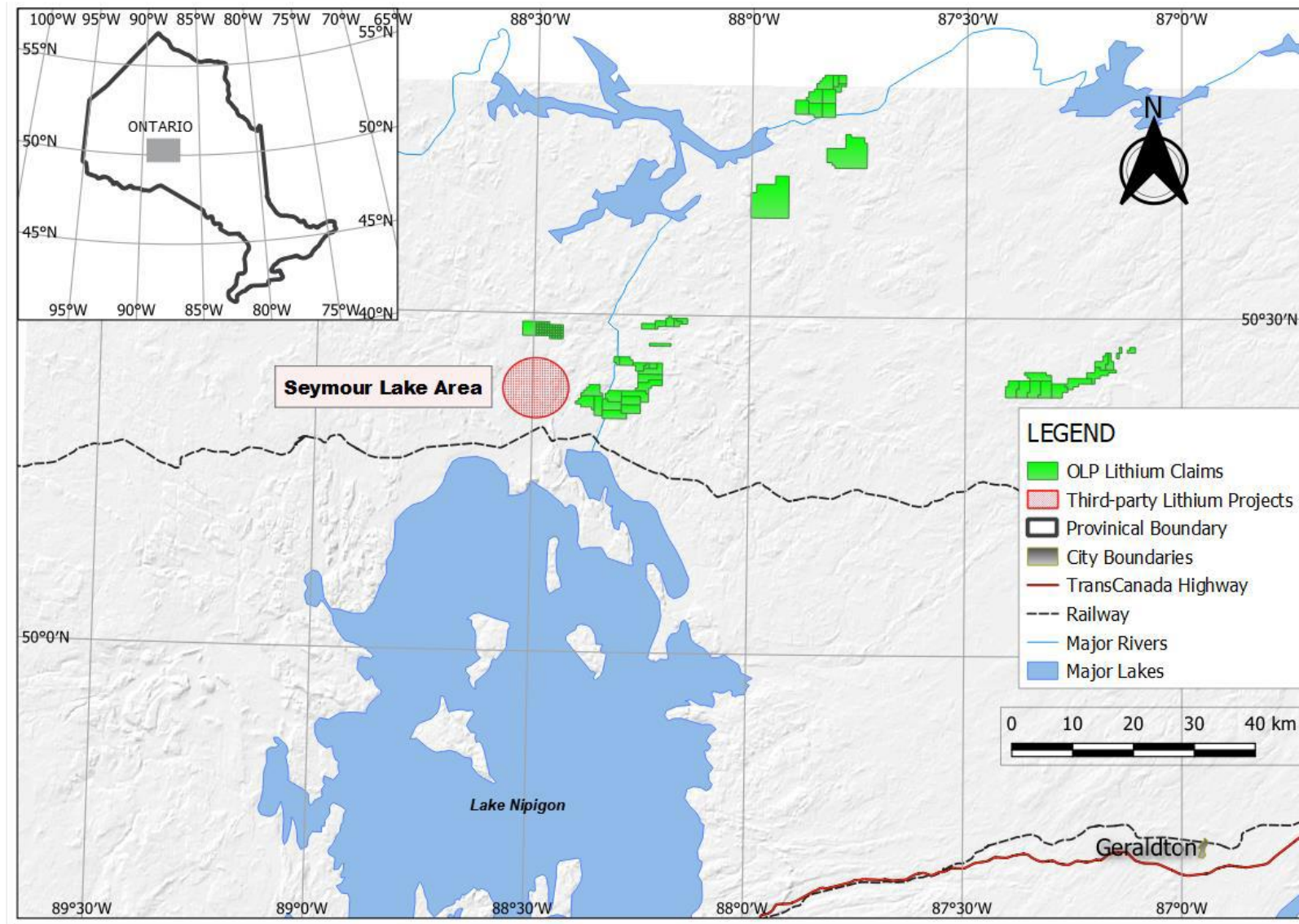
[ELECTRICROYALTIES.COM](http://ELECTRICROYALTIES.COM)



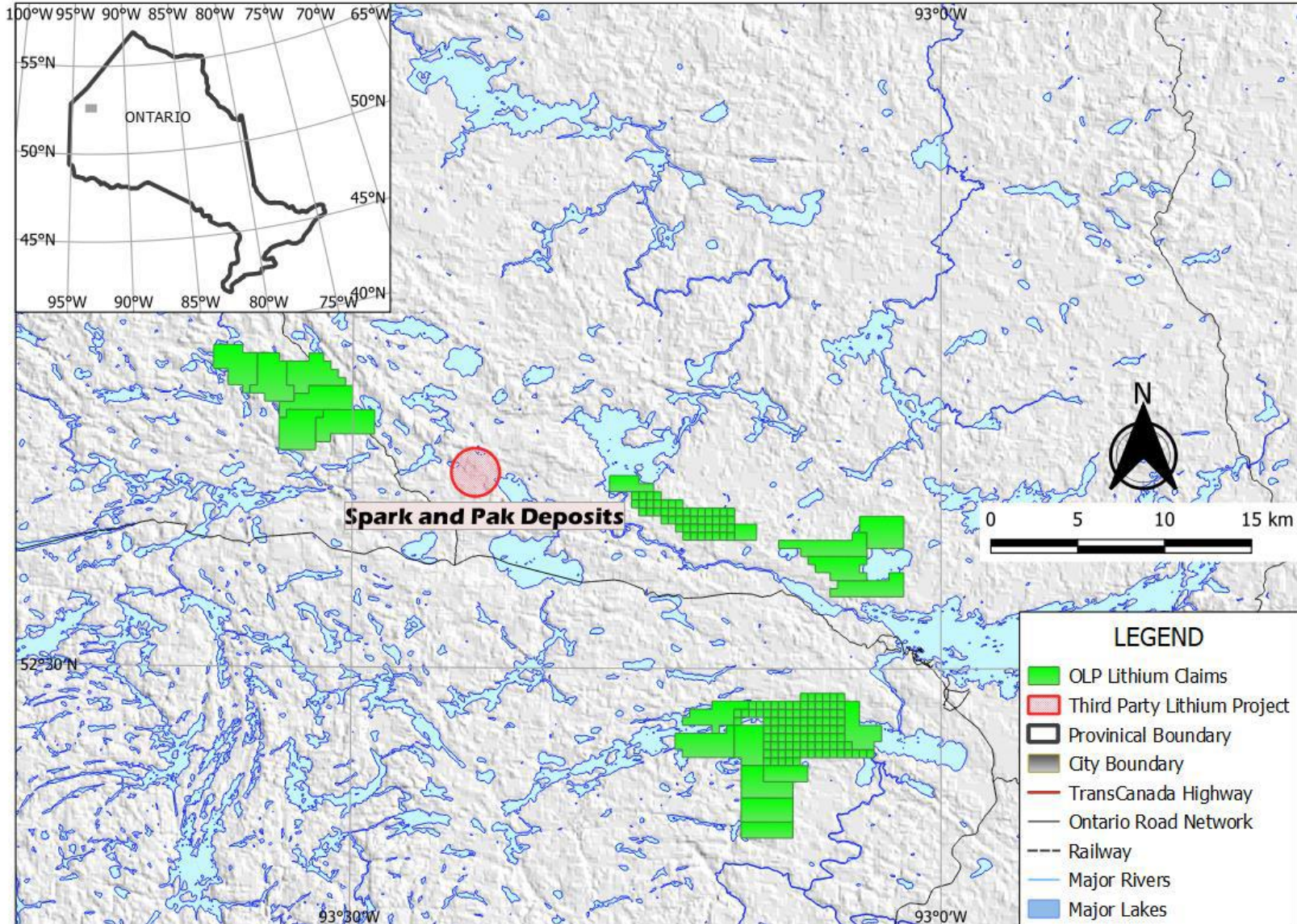


# APPENDIX

# ONTARIO LITHIUM PROJECTS IN THE SEYMOUR LAKE AREA

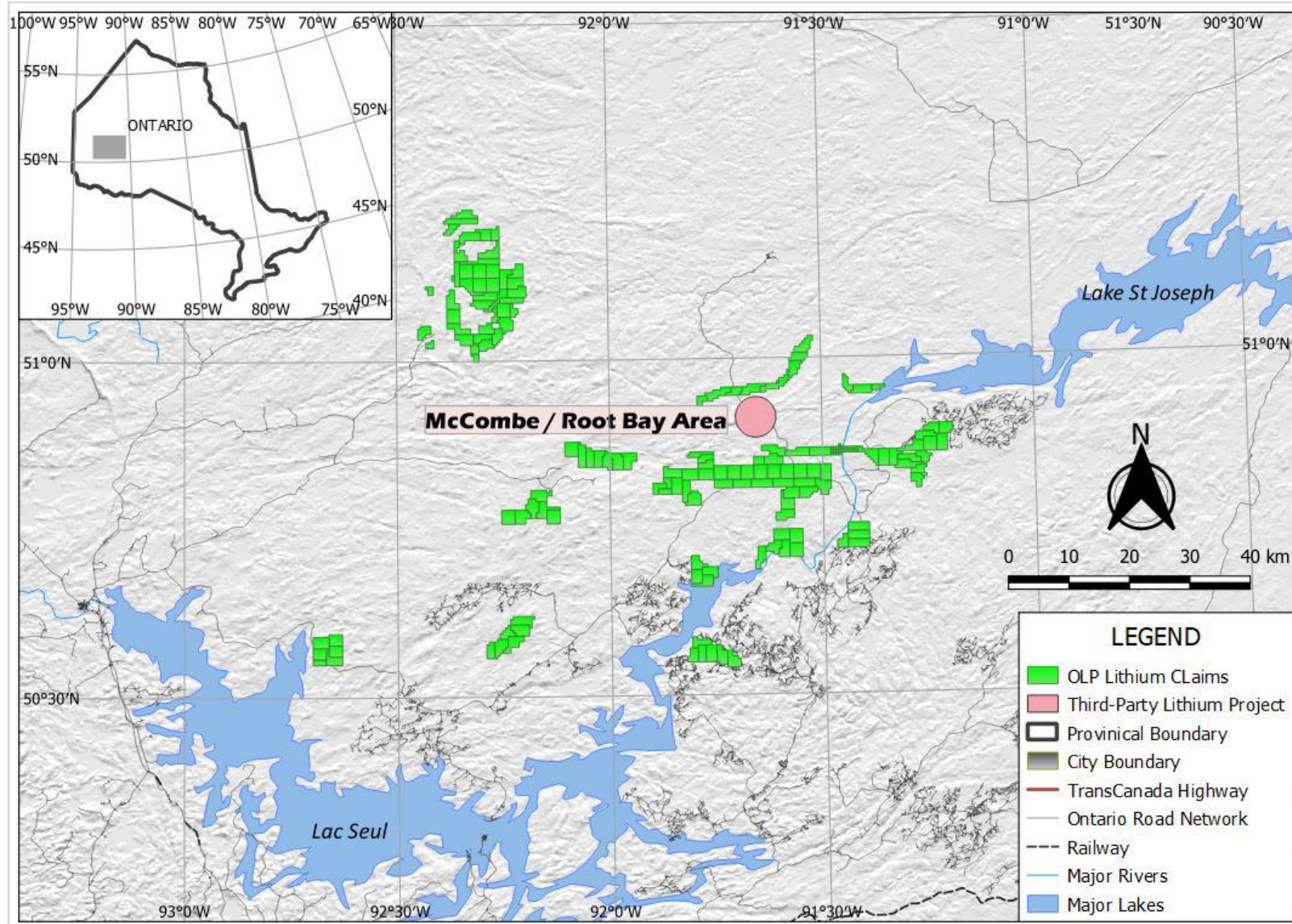


# ONTARIO LITHIUM PROJECTS AND FRONTIER LITHIUM'S SPARK AND PAK DEPOSITS





# ONTARIO LITHIUM PROJECTS IN THE ROOT BAY AREA



# ONTARIO LITHIUM PROJECTS IN VICINITY OF GEORGIA LAKE PROJECTS

