



SUSTAINING THE FUTURE: ROYALTIES ON CLEAN-ENERGY METALS

MARCH 2025 CORPORATE PRESENTATION

ELECTRICROYALTIES.COM

TSX.V | ELEC



OTCQB | ELEC

FORWARD-LOOKING STATEMENT

This presentation contains confidential and proprietary information belonging to Electric Royalties Ltd. ("Electric Royalties" or the "Company"). The recipient may not photocopy or otherwise reproduce this document or disclose its contents to anyone other than its authorized representatives without Electric Royalties' prior written consent. This presentation includes forward-looking information and forward-looking statements (collectively, "forward-looking information") with respect to the Company. This presentation includes information regarding other companies including projects owned by such other companies in which the Company holds a royalty interest based on previously disclosed public information disclosed by those companies and the Company is not responsible for the accuracy of that information, and all information provided herein is subject to this Disclaimer and Forward Looking Statement cautionary statement. Any statements that express or involve discussions with respect to predictions, expectations, beliefs, plans, projections, objectives, assumptions or future events or performance (often, but not always, using words or phrases including, but not limited to, "expects", "does not expect", "is expected", "anticipates", "does not anticipate", "plans", "estimates", "believes", "does not believe" or "intends", or stating that certain actions, events or results may, could, would, might or will be taken, occur or be achieved) are not statements of historical fact and are "forward-looking information". This information represents predictions and actual events or results may differ materially. Forward-looking information may relate to the Company's future outlook and anticipated events or results and may include statements regarding the Company's financial results, future financial position, expected growth of cash flows, business strategy, budgets, projected costs, projected capital expenditures, taxes, plans, objectives, industry trends and growth opportunities and those relating to projects owned by other companies in which the Company holds a royalty interest. Forward-looking information contained in this presentation is based on certain assumptions regarding expected growth, results of operations, performance, industry trends and growth opportunities. While management considers these assumptions to be reasonable, based on information available, they may prove to be incorrect. Forward-looking statements involve known and unknown risks, uncertainties and other factors which may cause the actual results, performance or achievements of the Company and other companies that own projects in which the Company holds a royalty interest to be materially different from any future results, performance or achievements expressed or implied by the forward-looking statements. These risks, uncertainties and other factors include, but are not limited to risks associated with general economic conditions; adverse industry events; marketing costs; loss of markets; future legislative and regulatory developments involving the mining, automotive and renewable energy industries; inability to access sufficient capital from internal and external sources, and/or inability to access sufficient capital on favorable terms; the mining, automotive and renewable energy industries generally, income tax and regulatory matters; the ability of the Company and other companies that own projects in which the Company holds a royalty interest to implement its business strategies including expansion plans; competition; currency and interest rate fluctuations, general economic and business conditions. The foregoing factors are not intended to be exhaustive. Although the Company has attempted to identify important factors that could cause actual actions, events or results to differ materially from those described in forward-looking statements, there may be other factors that cause actions, events or results to differ from those anticipated, estimated or intended. Forward-looking statements contained herein are made as of the date hereof and the Company and its directors, officers and employees disclaim any obligation to update any forward-looking statements, whether as a result of new information, future events or results or otherwise. There can be no assurance that forward-looking statements will prove to be accurate, as actual results and future events could differ materially from those anticipated in such statements. For further information, investors should review the Company's filings that are available at www.sedarplus.ca.

All forward-looking information is expressly qualified in its entirety by this cautionary statement. Forward-looking information and other information contained herein concerning management's general expectations concerning the mining, automotive and renewable energy industries are based on estimates prepared by management using data from publicly available industry sources as well as from market research and industry analysis and on assumptions based on data and knowledge of this industry which management believes to be reasonable. However, this data is inherently imprecise, although generally indicative of relative market positions, market shares and performance characteristics. While management is not aware of any misstatements regarding any industry data or comparables presented herein, industry data and comparables are subject to change based on various factors. The Company has not independently verified any of this data from independent third party sources.

Cautionary Note to U.S. Investors Concerning Resource and Reserve Estimates

The mineral resources and mineral reserves disclosed in this presentation have been estimated in accordance with Canadian National Instrument 43-101 – Standards of Disclosure for Mineral Projects ("NI 43-101"), as required by Canadian securities regulatory authorities. The Company is not subject to the reporting requirements of section 13(a) of section 15(d) of the United States Securities Exchange Act of 1934, as amended (the "Exchange Act"), the Company's U.S. investors should be aware that the SEC adopted amendments to its disclosure requirements for issuers whose securities are registered with the SEC (the "SEC Modernization Rules"). The SEC Modernization Rules include the adoption of definitions of resources and reserves and their various categories which are "substantially similar" to the corresponding terms under the Definition Standards developed by the Canadian Institute of Mining and Metallurgy ("CIM Definition Standards") as required under NI 43-101. Accordingly, there is no assurance any resources and reserves that we may report as "measured mineral resources", "indicated mineral resources" and "inferred mineral resources" and "proven mineral reserves" and "probable mineral reserves" under NI 43-101 would be the same had we prepared these estimates under the standards adopted under the SEC Modernization Rules. Inferred Resources have a great amount of uncertainty as to their economic and legal feasibility. Under Canadian rules, estimates of Inferred Resources may not form the basis of feasibility or pre-feasibility studies, or economic studies except for a Preliminary Economic Assessment as defined under NI 43-101. For the above reasons, information contained in this presentation containing descriptions of the mineral deposits on the properties in which we hold royalty interests may not be comparable to similar information made public by United States companies subject to the reporting and disclosure requirements under the United States federal securities laws and the rules and regulations thereunder.

Technical information contained in this presentation has been reviewed and approved by David Gaunt, PGeo, a qualified person that is not independent of Electric Royalties Ltd.

This information is not intended to be and should not be construed in any way as part of an offering or solicitation of securities. No securities commission or other regulatory authority in Canada, the United States or any other country or jurisdiction has in any way passed upon the information contained in these pages. Although the Company believes the facts and information contained in the pages of this presentation to be correct and attempts to keep this information as current as possible, the Company does not warrant or make any representations as to the accuracy, validity or completeness of any facts or information contained in these pages. Unless otherwise specified, no user has permission to copy, redistribute, reproduce or republish, in any form, any information found in the pages of this presentation. Any user who, without authorization, re-transmits, copies or modifies any trademarks may violate federal or common law trademark and/or copywriter law, and may be subject to legal action.



WHY INVEST IN ELECTRIC ROYALTIES?

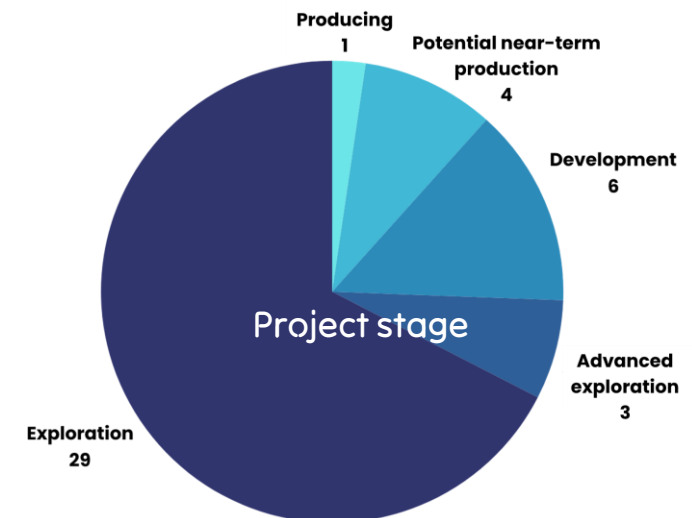
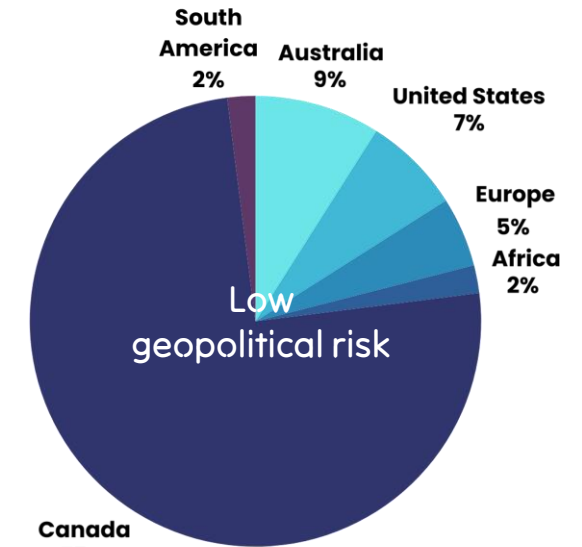
- Gain exposure to a growing portfolio of royalties on **metals required for the drive to sustainable electrification:**

COPPER	LITHIUM	ZINC
COBALT	MANGANESE	NICKEL
TIN	VANADIUM	GRAPHITE

- **Significant growth forecast in demand for clean energy metals**
- Management team with **proven track record in creating value for shareholders**
- **Revenue-generating** royalty portfolio



43 total royalties across 9 clean energy metals plus 17 optioned properties¹ that could be converted into royalties²



1. As at March 18, 2025
2. Electric Royalties news release dated May 1, 2024



ROYALTY COMPANY ADVANTAGES

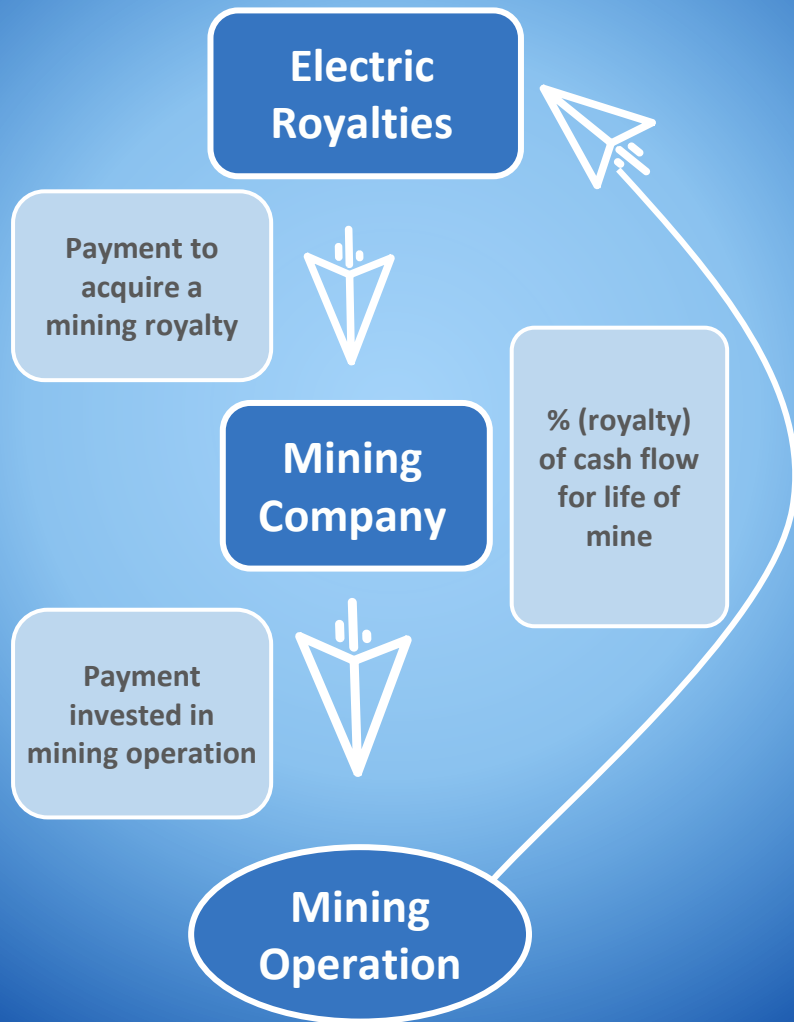
- ⚡ The royalty/streaming business model (e.g. Franco Nevada, Wheaton Precious Metals) has been **proven to outperform mining companies**
- ⚡ Royalty companies do not operate mines nor need large and highly specialized teams to carry on their regular course of business
- ⚡ **Diversifies investments and mitigates risk**
- ⚡ Royalties are generally registered against mineral title
- ⚡ **Lower risk** – royalties are typically based on revenues and paid irrespective of underlying profitability, with no further capital outlay required

COMPETITIVE ADVANTAGES	MINING COMPANY	ROYALTY COMPANY
⚡ Leverage to commodity prices	✔	✔
⚡ Exploration upside	✔	✔
⚡ Production rate upside	✔	✔
⚡ No capital expense overruns		✔
⚡ No sustaining costs		✔
⚡ No exploration costs		✔
⚡ Fixed cash costs forever		✔
⚡ Average revenue per employee	\$300k	\$20 million
⚡ Valuation multiple FCF	6x	21.6x ¹

1. Scotiabank: Monthly Streaming and Royalty Recap (May 2021)



THE PROCESS OF ACQUIRING ROYALTIES



ESTIMATING ANNUAL ROYALTY CASH FLOW

$$\text{ANNUAL PRODUCTION} \times \text{METAL PRICE} \times \text{ROYALTY RATE} = \text{GROSS REVENUE ROYALTY ("GRR")}$$






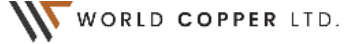
If metal prices double = revenues double

If production rate doubles = revenue doubles

If resources double = life-of-mine cashflows double



ROYALTY RATE AND POTENTIAL PRODUCTION METRICS FOR SELECTED PROJECTS

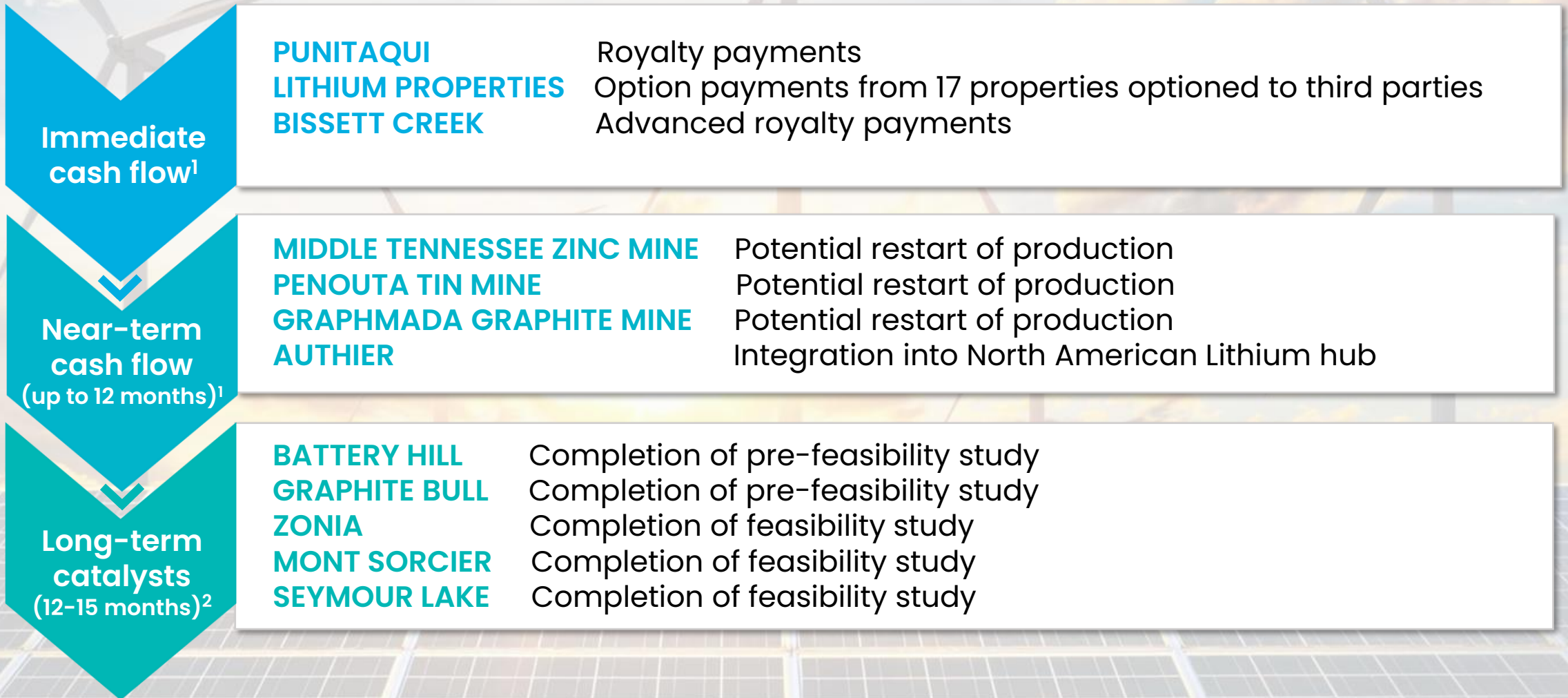
Project	Metal	Operator	Royalty Rate	Projected Annual Production ¹	Metal Price ²
PUNITAQUI	Copper		0.75% GRR	19 million to 23 million pounds	US\$4.98/pound
BISSETT CREEK	Graphite		1.5% GRR	33,183 tonnes	US\$1,800/tonne
BATTERY HILL	Manganese		2% GMR	68,000 tonnes	US\$2,900/tonne
KENBRIDGE	Nickel-copper		0.5% GRR & option to add 1% GRR on Kenbridge North	7.3 million NiEq pounds	US\$10/pound
MONT SORCIER	Vanadium		1% GMR on vanadium	5,000,000 tonnes	US\$15/tonne
ZONIA	Copper		0.5% GRR & option to add 1% GRR on Zonia North	<i>Feasibility Study underway</i>	<i>TBD</i>

1. Projected annual production from sources below:

- Punitaqui: full annual copper production rate projected at 19 million to 23 million pounds of copper in concentrate (Battery Mineral Resources Corp. news release dated May 13, 2024; Battery Mineral Resources Corp. website <https://bmrcorp.com/projects/projects-map/>)
 - Bissett Creek: Northern Graphite Corporation Bissett Creek Project PEA; Leduc, M; Effective Date December 6, 2013; Further information and technical reports can be obtained through the Northern Graphite profile at sedarplus.ca or northerngraphite.com.
 - Battery Hill: Technical report titled "NI 43-101 Technical Report on the Preliminary Economic Assessment of the Battery Hill Manganese Project, Woodstock, New Brunswick, Canada" with an effective date of May 12, 2022, available under Manganese X Energy Corp.'s profile on sedarplus.ca
 - Kenbridge: Technical report titled "Preliminary Economic Assessment of the Kenbridge Nickel Project, Kenora, Ontario" with an effective date of July 6, 2022, available under Tartisan Nickel Corp.'s profile on sedarplus.ca
 - Mont Sorcier: Technical report titled "Preliminary Economic Assesment (PEA) for the Mont Sorcier Project – Quebec, Canada," effective date September 8, 2022 available under Voyager Metals' profile on sedarplus.ca
2. Copper spot price US\$4.98/pound (as of March 18, 2025), base case graphite weighted average price of US\$1,800/tonne of concentrate in Bissett Creek PEA, high-purity manganese sulphate (HPMSM) US\$2,900/tonne ([source](#)), baseline nickel price US\$10/pound in Kenbridge PEA, vanadium credit US\$15/tonne in Mont Sorcier PEA.

PEAs are preliminary in nature and include Inferred Mineral Resources that are considered too speculative geologically to have the economic considerations applied to them that would enable them to be categorized as Mineral Reserves as defined under NI 43-101 regulations for Canadian Public Companies. There is no certainty that the PEA will be realized. Mineral Resources that are not Mineral Reserves do not have demonstrated economic viability.

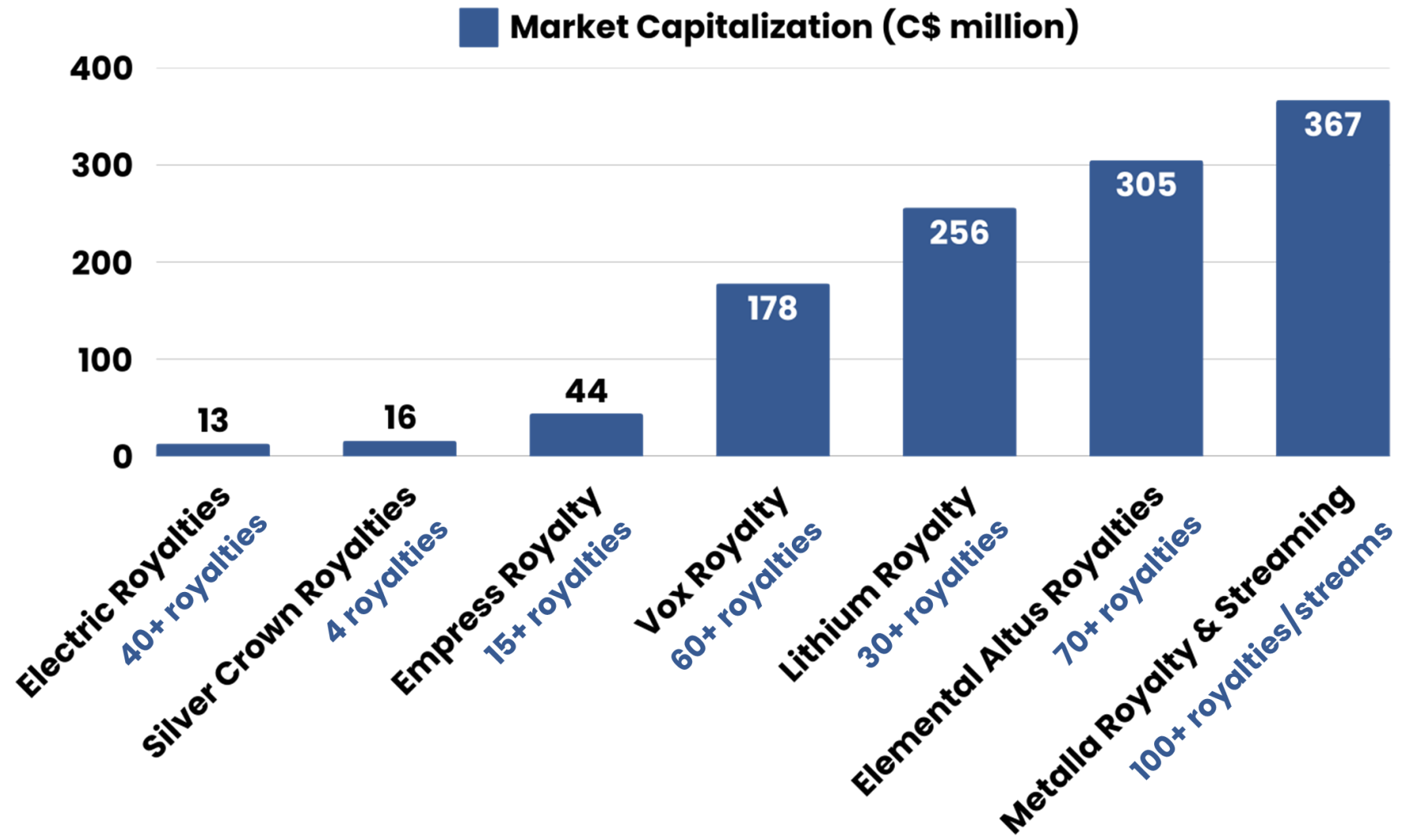
UPCOMING CATALYSTS¹: RIGHT TIME TO INVEST IN \$ELEC



1. Timeline is based on Electric Royalties' expectations
2. Timeline is based on information from project owners

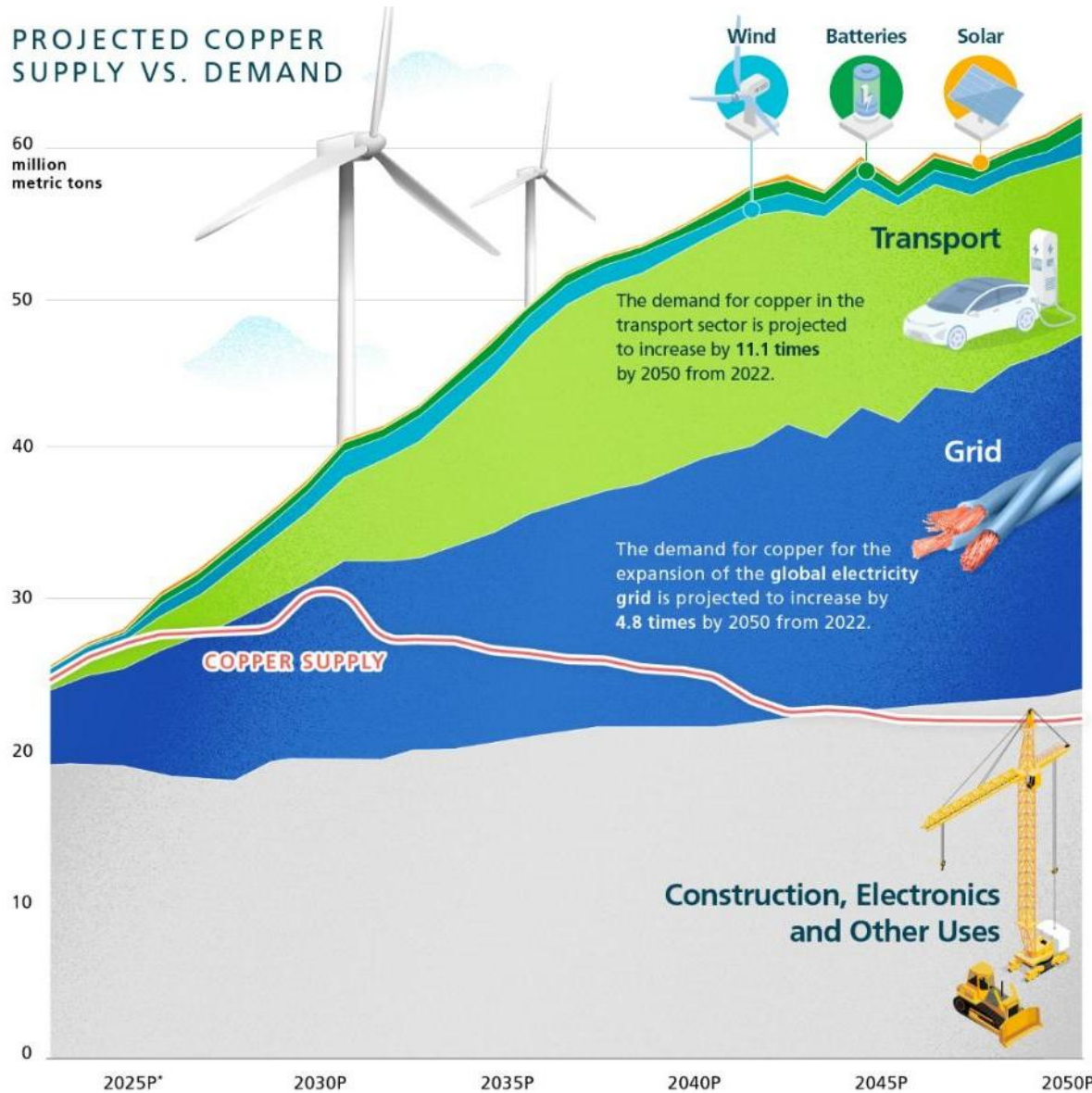


ELECTRIC ROYALTIES' PEER GROUP



As of March 6, 2025

COPPER THE NEW OIL IN AN ELECTRIFIED WORLD?



- ⊖ Copper is a vital industrial metal. Everything from electronics, automotives, power transmission infrastructure, data centers, clean energy technologies, to defense systems—depends on copper.
- ⊖ Copper is extensively used in cooling, power, and connectivity infrastructure for artificial intelligence and data centers, requiring a projected additional 2.6 million tonnes by 2030¹.

5-year copper price²



Left image source: Visual Capitalist; BloombergNEF Transition Metals Outlook 2023. Demand is based on net-zero scenario to meet goals of Paris Agreement. For illustrative purposes only. *Projected data.

¹ J.P. Morgan analyst Dominic O’Kane note, March 2024

² <https://tradingeconomics.com/commodity/copper>



KEY ASSETS | COPPER

PROJECT **Punitaqui Copper Mine**

ROYALTY 0.75% GRR

LOCATION Chile

STAGE Producing

OPERATOR Battery Mineral Resources Corp. (majority owned by Yorktown Group)

- Punitaqui has four satellite copper resources, excellent road access, ready availability of water and power, fixed assets, infrastructure and key permits
- The 0.75% GRR would also apply to third-party materials processed through the Punitaqui mining complex
- Regional exploration targets on the property that could be advanced in the near term
- Commenced copper concentrate production in May 2024; financing by Electric Royalties to enable production ramp up



The Punitaqui Mining Complex, which includes the copper processing plant that is currently permitted for 100,000 tonnes per month

KEY ASSETS | COPPER

PROJECT **Zonia**

ROYALTY 0.5% GRR & option to add 1% GRR on Zonia North

LOCATION Arizona, USA

STAGE Feasibility study underway

OPERATOR World Copper

Since our royalty acquisition, an updated resource estimate nearly doubled contained copper in the ground, from ~500 million pounds to ~1 billion pounds¹



PROJECT **Millennium**

ROYALTY 0.5% GRR

LOCATION Queensland, Australia

STAGE Advanced exploration

OPERATOR Metal Bank

Significant cobalt-copper deposit that remains open for expansion; located close to well established mining, transport and processing infrastructure



1. World Copper Ltd. news release dated September 9, 2024. The NI 43-101 technical report filed on sedarplus.ca is titled "Resource Estimate for The Zonia Project 2024 Update" with effective date August 27, 2024, amended November 8, 2024. The updated estimate includes 112.2 million short tons grading 0.297% total-copper in the Indicated category (668 million pounds of copper) and 62.9 million short tons grading 0.255% total-copper in the Inferred category (320 million pounds of copper) at a cut-off grade of 0.18%; recoveries of 75% in oxides and 70% in the transitional zone.

KEY ASSETS | ZINC

🔌 Zinc plays a critical role in batteries, energy storage and protection of steel

PROJECT	ROYALTY	LOCATION	STAGE	OPERATOR
Middle Tennessee Zinc Mine	Sliding Scale Gross Mining Royalty above US\$0.90/lb Zn	USA	Producing (paused)	Nyrstar / Trafigura

- Production has occurred across a timespan of more than 45 years; currently paused
- Project comprises two underground zinc mines, Gordonsville and Cumberland
- Processing plant at Gordonsville mine plus nearby Clarksville smelter create an integrated mining complex
- Presence of gallium and germanium (currently under export ban by China)



KEY ASSETS | NICKEL

🔌 Nickel is primarily used in stainless steel production and batteries

PROJECT **Rana**

ROYALTY 1% NSR

LOCATION Norway

STAGE Advanced exploration

OPERATOR Metals One Plc / Global Energy
Metals / Kingsrose Mining

Well funded through operator's JV partner Kingsrose Mining; project includes past-producing Bruvann Nickel Mine which has been underexplored



PROJECT **Kenbridge**

ROYALTY 0.5% GRR & option to add 1% GRR on Kenbridge North

LOCATION Canada

STAGE PEA complete

OPERATOR Tartisan Nickel

The Kenbridge Project has all-season road access to within 9 km of the deposit; surface exploration and definition drilling plan underway



KEY ASSETS | TIN

🔌 Tin's unique properties of malleability and corrosion resistance make it essential to the connectivity of all things electric, including circuit boards, electric vehicles, and photovoltaic cells

PROJECT **Penouta Mine**

ROYALTY 1.5% GRR

LOCATION Spain

STAGE Producing (paused)

OPERATOR Strategic Minerals Europe Corp.

Europe's largest tin and tantalum producer until production paused in 2023¹; long potential mine life based on total measured and indicated resources of 76.3 million tonnes²

PROJECT **Sleitat**

ROYALTY 1% NSR

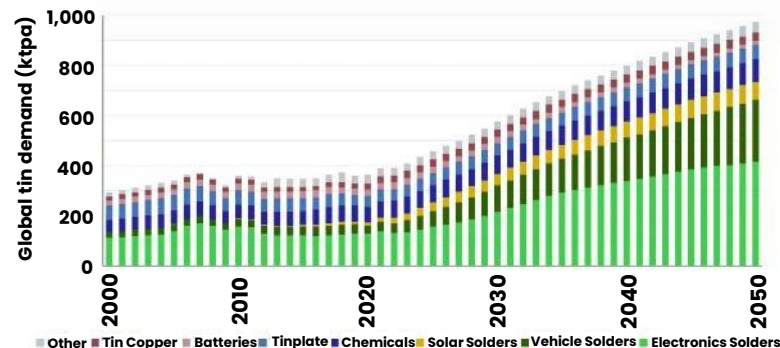
LOCATION USA

STAGE Exploration

OPERATOR Cornish Metals

Sleitat is one of only two tin deposits in the US with potential to be economically viable, according to the USGS³

Tin demand is driven by the energy transition⁴



1. Strategic Minerals Europe Corp. website <https://www.strategicminerals.com/what-we-do/#penouta-mine>. Strategic Minerals Europe Corp. is seeking financial solutions and is working to expedite the reinstatement of permitting with the goal of restarting production.
2. Further information is available in a NI 43-101 technical report by SRK with effective date March 5, 2021 on the Strategic Minerals Europe Corp. profile at www.sedarplus.ca. M+I Resources are reported at grades of 443 ppm Sn, 73 ppm Ta and 89 ppm Ta₂O₅. Resources at an open pit cut-off grade of 60 ppm Ta₂O₅Eq, based on prices and recoveries of US\$178/kg and 75% for Ta₂O₅, and US\$24/kg and 75% for tin.
3. Kamilli, R.J. et al; Chapter S of Critical Mineral Resources of the United States—Economic and Environmental Geology and Prospects for Future Supply; USGS Professional Paper 1802-S; 2017
4. <https://thundersaidenergy.com/downloads/global-tin-demand-upside-in-energy-transition/>

KEY ASSETS | GRAPHITE

- Graphite is the anode material in lithium-ion batteries and is used in brushes for electric motors and cores of nuclear reactors

PROJECT **Bissett Creek**

ROYALTY 1.5% GRR

LOCATION Canada

STAGE PEA complete

OPERATOR Northern Graphite

Bissett Creek is operated by Northern Graphite, one of the very few graphite producers outside of China that is aiming to build North America's largest battery anode material plant by 2026

BISSETT CREEK PEA¹

ANNUAL PRODUCTION	33,183t
GRAPHITE BASE CASE PRICE	US\$1,800/t
MINE LIFE	22 years

¹Northern Graphite Corporation Bissett Creek Project PEA; Leduc, M; Effective Date December 6, 2013; Further information and technical reports can be obtained through the Northern Graphite profile at sedarplus.ca or northerngraphite.com. The PEA is preliminary in nature and includes Inferred Mineral Resources that are considered too speculative geologically to have the economic considerations applied to them that would enable them to be categorized as Mineral Reserves as defined under NI 43-101 regulations for Canadian Public Companies. There is no certainty that the PEA will be realized.

PROJECT **Graphmada**

ROYALTY 2.5% NSR

LOCATION Madagascar

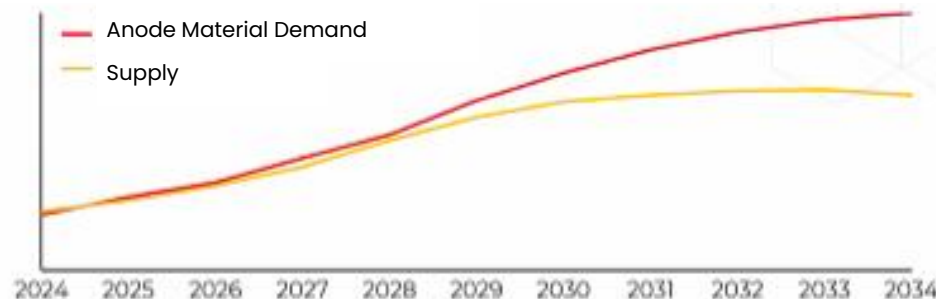
STAGE Engineering studies towards production restart

OPERATOR Greenwing Resources

Previously producing mine now on care and maintenance; concentrates have been qualified and sold while search is underway for JV partner to recommence production

Battery sector is the largest driver of graphite demand

Ex-China Battery Grade, -100 Mesh Supply and Demand for Anode Materials (million tonnes)



Source: Benchmark Mineral Intelligence
[Webinar Series: The Mines of Tomorrow](#)



KEY ASSETS | MANGANESE

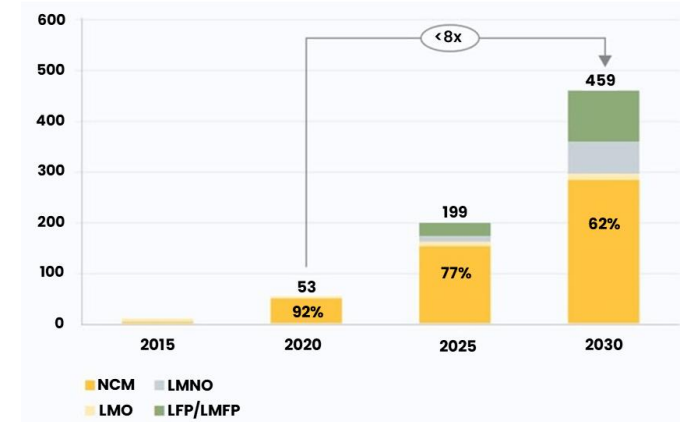
- ⚡ Manganese is a cathode material in EV batteries, designed to increase their safety aspect, energy density and cost effectiveness; it is also an essential alloy that helps convert iron into steel

PROJECT	Battery Hill
ROYALTY	2% GMR
LOCATION	Canada
STAGE	PEA complete
OPERATOR	Manganese X Energy

BATTERY HILL PEA ^{2,3}	
AFTER-TAX NPV ₁₀	US\$486M
AFTER-TAX IRR	25%
CAPEX	US\$350M, 2.8-year payback
AVERAGE GROSS REVENUE	US\$177M/year over 47-year mine life

Battery demand for manganese set to accelerate⁴

Manganese demand for cathodes, thousand tonnes M contained (2015-2030)



- Battery Hill is one of the largest carbonate manganese deposits in North America and has the potential to be a substantial contributor to the supply chain of high-purity manganese for the EV industry¹
- C\$2 million investment in 2025 by mining luminary Eric Sprott to fund completion of pre-feasibility study
- Product pre-qualification processes underway

The PEA is preliminary in nature; it includes Inferred Mineral Resources that are considered too speculative geologically to have the economic considerations applied to them that would enable them to be categorized as Mineral Reserves, and there is no certainty that the preliminary economic assessment will be realized.

1. Manganese X Energy website <https://www.manganesexenergycorp.com/lets-talk-canadas-critical-minerals-list-and-methodology/>
2. Technical report titled "NI 43-101 Technical Report on the Preliminary Economic Assessment of the Battery Hill Manganese Project, Woodstock, New Brunswick, Canada" with an effective date of May 12, 2022, Available under Manganese X Energy Corp.'s profile on sedar.com
3. Base case market price of \$2,900/tonne for battery-grade high-purity manganese sulphate (HPMSM) used for the study is well below the long-term forecast price of \$4,200/tonne HPMSM estimated by CPM Group. Based on open-pit mining at mining rate of 1,000 tpd, and whole ore sulphuric acid slurry leach processing further treated to produce a crystalline manganese sulphate monohydrate product. LOM operating cost of \$122/tonne material processed.
4. Benchmark Mineral Intelligence [Manganese Sulphate Market Outlook](#)



KEY ASSETS | VANADIUM

🔌 Vanadium is used to strengthen steel and is a key component in energy storage

PROJECT **Mont Sorcier**

ROYALTY 1% GMR on vanadium

LOCATION Canada

STAGE PEA complete

OPERATOR Cerrado Gold

- Electric Royalties holds a 1% gross metal royalty on the vanadium content at Mont Sorcier
- Fully funded feasibility study underway
- UKEF and TD Bank have agreed to sponsor 70% of project capital required subject to customary conditions of Export Credit Agency funding¹
- Partnered with Glencore for financing support and offtake

Mont Sorcier Project 2022 Mineral Resource Estimate²

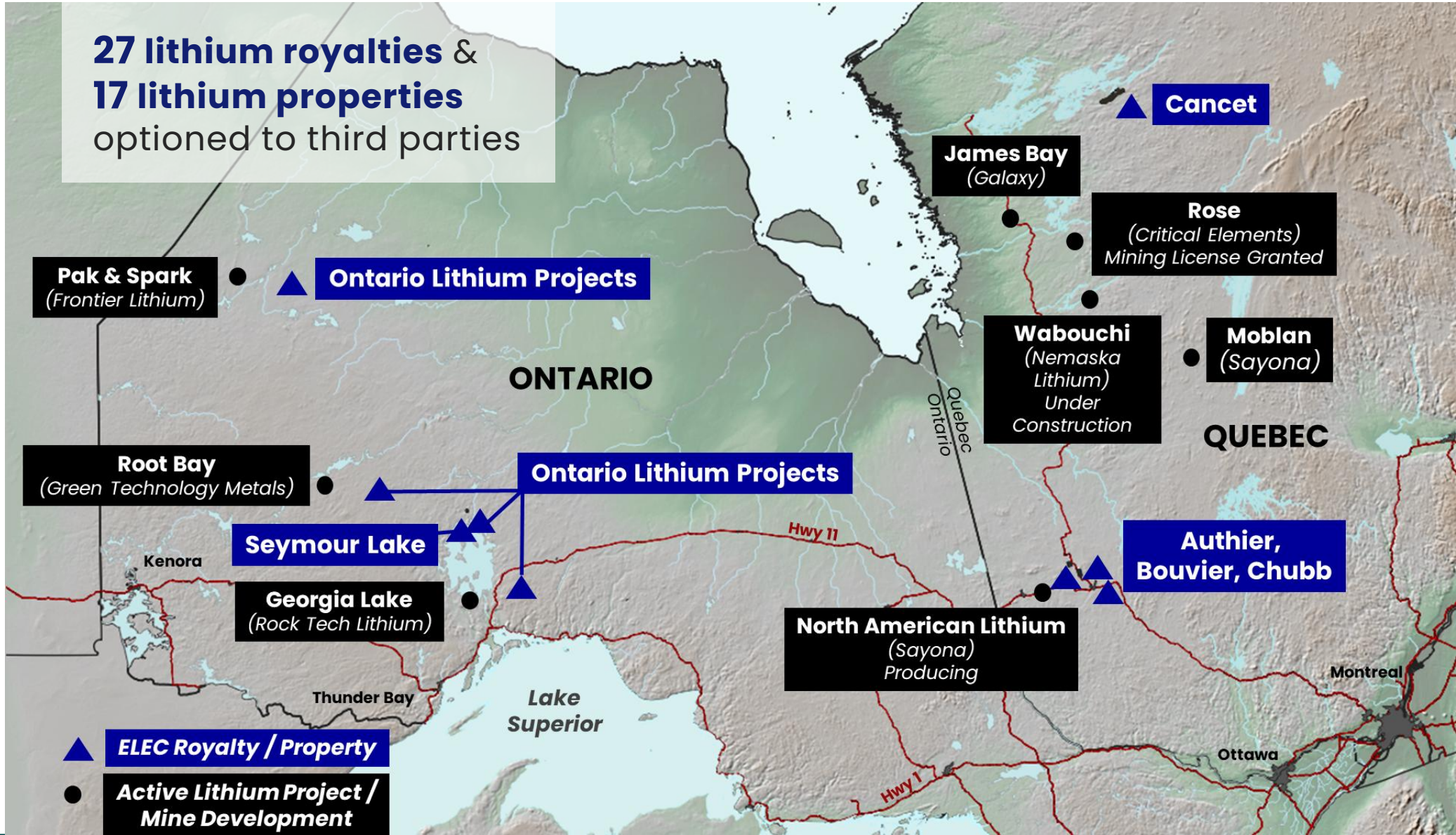
Zone	Category	Tonnage				Head grade								Conc.
		Rock (Mt)	Fe Rec (%)	W Rec (%)	Conc. (Mt)	Fe ₂ O ₃ (%)	Fe (%)	Fe ₃ O ₄ (%)	V ₂ O ₅ (%)	TiO ₂ (%)	MgO (%)	SiO ₂ (%)	S (%)	Fe (%)
North	Indicated	559.3	72.05	29.21	163.4	37.70	26.35	28.20	0.21	1.10	19.78	25.13	1.12	65.00
	Inferred	470.5	72.97	27.39	128.9	34.90	24.40	26.41	0.18	1.32	19.79	27.91	0.49	65.00
South	Indicated	119.2	82.04	26.85	32.0	30.43	21.27	25.64	0.17	1.49	24.09	24.43		65.00
	Inferred	76.2	81.38	25.23	19.2	28.83	20.15	24.11	0.13	1.46	22.39	23.14		65.00
Total	Indicated	678.5	73.52	28.80	195.4	36.42	25.46	27.75	0.20	1.17	20.54	25.01		65.00
	Inferred	546.6	73.96	27.09	148.1	34.05	23.80	26.09	0.17	1.34	20.15	27.25		65.00

1. Cerrado Gold news release dated December 4, 2024

2. NI 43-101 Technical Report and Mineral Resource Estimate for the Mont-Sorcier Property, Quebec, Canada with effective date June 6, 2022. These mineral resources are not mineral reserves, as they do not have demonstrated economic viability. The mineral resource estimate is locally pit-constrained for potential open-pit extraction method with a bedrock slope angle of 50° and an overburden slope angle of 30°. It is reported at a rounded cut-off grade of 2.30% Weight Recovery. The cut-off grade was calculated for the concentrate using the following parameters: royalty = 3%; mining cost = CA\$3.30; mining overburden cost = CA\$2.45; processing cost = CA\$3.62; G&A = CA\$0.75; selling costs = CA\$58.36; Fe price = CA\$190/t; USD:CAD exchange rate = 1.3; and mill recovery = 100% (concentrate). The cutoff grades should be re-evaluated considering future prevailing market conditions (metal prices, exchange rates, mining costs etc.).



LITHIUM PORTFOLIO STRATEGICALLY LOCATED IN ONTARIO AND QUÉBEC



KEY ASSETS | LITHIUM

- 🔌 Lithium is used to make energy-dense rechargeable batteries for electronics, such as laptops, cell phones, electric vehicles, and grid storage

PROJECT **Authier**

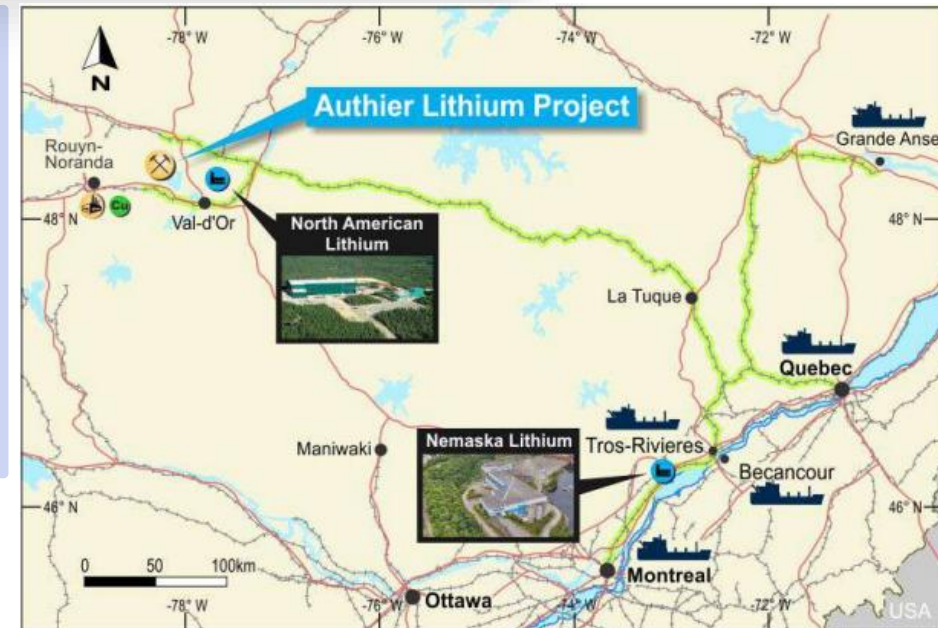
ROYALTY 0.5% Gross Metal Royalty on part of Authier

LOCATION Quebec, Canada

STAGE Feasibility study complete for North American Lithium (NAL)

OPERATOR Sayona Mining

- In April 2023, Sayona announced a feasibility study that combines its Québec flagship North American Lithium (NAL) operation and the nearby Authier Lithium Project¹
- Production at NAL commenced in March 2023; Production at Authier planned
- Sayona raised A\$190 million in May 2022 to advance NAL to production and develop Authier



Source: Sayona Mining

1. Sayona Mining Limited news release dated April 14, 2023, titled "DEFINITIVE FEASIBILITY STUDY CONFIRMS NAL VALUE WITH A\$2.2B NPV".

KEY ASSETS | LITHIUM

PROJECT **Seymour Lake**

ROYALTY 1.5% NSR

LOCATION Canada

STAGE Feasibility study underway

OPERATOR Green Technology Metals

In December 2024, Green Technology Metals received a Letter of Interest from Export Development Canada for up to C\$100 million in project financing for Seymour Lake

PROJECT **Cancel**

ROYALTY 1% NSR

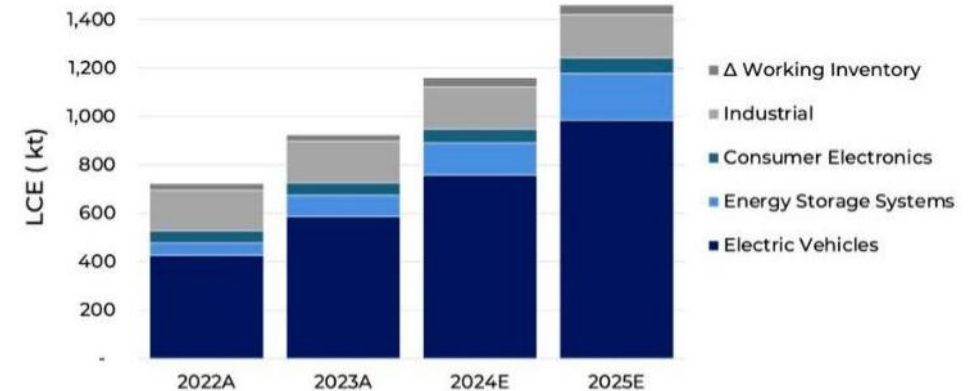
LOCATION Canada

STAGE Advanced exploration

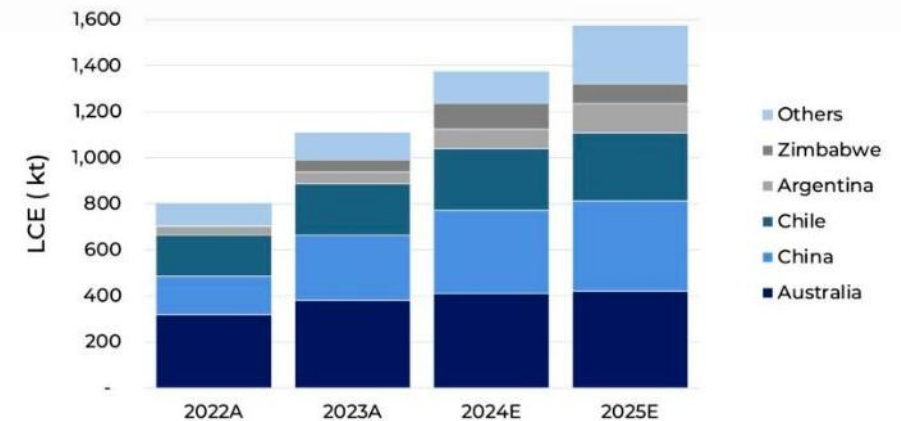
OPERATOR Winsome Resources

Multiple drilling campaigns over landholding of over 200km² have confirmed the presence of high-grade, shallow lithium mineralization

Lithium market could see modest recovery in 2025, with demand growing by 26%



Lithium supply to grow 16% in 2025

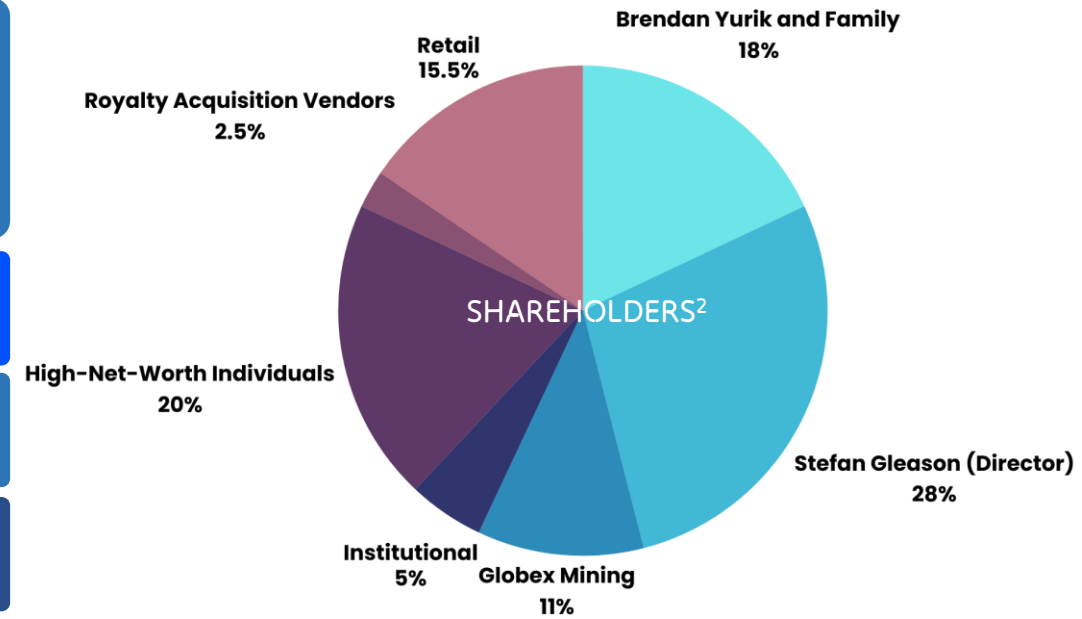


Source: Adamas Intelligence Battery Metals Forecast Service
LCE: Lithium Carbonate Equivalent in kilotonnes measured on recoverable lithium basis



CORPORATE STRUCTURE

CASH & DEBT POSITION ¹	CASH & CASH EQUIVALENTS	C\$1.3M
	CONVERTIBLE LOAN <ul style="list-style-type: none"> From ELEC Director Stefan Gleason, who holds ~28% interest in \$ELEC No payment of any kind until January 2028 	C\$10.0M
SHARE STRUCTURE ¹	MARKET CAPITALIZATION	C\$19.3M
	SHARES OUTSTANDING	116,798,919
	OPTIONS	8,081,000
	WARRANTS	31,597,279
	FULLY DILUTED	156,477,198



1. As at January 21, 2025

2. As at March 6, 2025; figures are approximate



DIRECTORS, OFFICERS & MANAGEMENT

CEO & DIRECTOR: BRENDAN YURIK B.COM

Founder and CEO of Evenor Investments Ltd, a financial advisory group to junior mining companies for alternative financing, debt, equity and M&A with experience in over \$2 billion in mining financing transactions throughout his career. Prior global experience as a research analyst as well as in business development and mining financial advisory roles with Endeavour Financial, Cambrian Mining Finance Ltd, Northern Vertex Mining Corp. and King & Bay West Management Corp.

CHAIRMAN: CRAIG LINDSAY MBA, CFA

30 years' experience in corporate finance, venture capital and public company management. Managing Director of Arbutus Grove Capital Inc. Former Founder and CEO of Otis Gold Corp. until its merger with Excellon Resources Inc. in April 2020. Former Founder and CEO of Magnum Uranium Corp., leading its development and eventual sale to Energy Fuels Inc. Currently a Director of Revolve Renewable Power Corp., Excellon Resources Inc., VR Resources Ltd., and Silver North Resources Ltd.

DIRECTOR: ROBERT SCHAFER P.GEO

Director of International Royalty Corp (sold for \$800m to Royal Gold). More than 30 years of experience working internationally in business development roles with major and junior mining companies including formerly representing as Chairman of PDAC. Serves as a director of a number of public resource companies.

DIRECTOR: STEFAN GLEASON

President & CEO of Money Metals Exchange LLC, one of the largest precious metals dealers and depositories in North America with over C\$1 billion in annual revenues. Managing Director of Gleason & Sons LLC, a limited liability company which holds and manages debt, equity, and real estate investments. Published by the Wall Street Journal, Newsweek, Mining.com, TheStreet, and others.

CFO: LUQMAN KHAN CPA, CGA

CFO of RE Royalties Ltd, a renewable energy royalty company, involved in the acquisition of over 100 royalties to date. Financial reporting executive with over 20 years of professional experience in accountancy and business management. Served as CFO for several publicly listed TSX-V resource companies and previously with Ernst and Young in their assurance practice.

CHIEF GEOSCIENTIST DAVID GAUNT P.GEO

An economic geologist specializing in project assessment and resource estimation. His experience spans projects worldwide and includes roles with senior mining companies and junior exploration companies. Co-recipient of the PDAC's Thayer Lindsley International Discovery Award.



A HIGH-VALUE GROWTH AND INCOME INVESTMENT OPPORTUNITY

- ✓ Increasing electric vehicle and battery production is set to **drastically increase demand growth across electric metals over the next decade**
- ✓ Targeting **long-term recurring and diversified royalty cash flows** with no ongoing holding costs
- ✓ Royalty companies have been shown to **outperform investing directly in operating mining companies** and the underlying commodities associated with them
- ✓ **Experienced management team and board to drive the company forward**, including experienced royalty executives, geologists and mining financiers



TSX.V | ELEC
OTCQB | ELECF



CONTACT

BRENDAN YURIK (CEO)

✉ BRENDAN.YURIK@ELECTRICROYALTIES.COM

📱 +1.604.364.3540

GENERAL ENQUIRIES

✉ INFO@ELECTRICROYALTIES.COM

📱 +1.604.639.9200

1400 – 1040 WEST GEORGIA STREET
VANCOUVER, B.C. V6E 4H1, CANADA

ELECTRICROYALTIES.COM





APPENDIX

ROYALTY PORTFOLIO

(LISTED BY DEVELOPMENT STAGE)

#	ACQUIRED	PROJECT	MINERAL	DEVELOPMENT STAGE	ROYALTY ^{1,2,3}	LOCATION	OPERATOR	MARKET CAP C\$ ⁴
1	2024	PUNITAQUI	Copper	Producing	0.75% GRR	Chile	Battery Mineral Resources	16M
2	2021	MIDDLE TENNESSEE ZINC MINE	Zinc	Producing (paused)	Sliding Scale Gross Mining Royalty above US\$0.90/lb Zn	United States	Nyrstar / Trafigura	Private
3	2022	PENOUTA MINE	Tin-Tantalum	Producing (paused)	1.5% GRR	Spain	Strategic Minerals Europe Corp	Delisted
4	2021	GRAPHMADA	Graphite	Engineering Studies – Restart	2.5% NSR	Madagascar	Greenwing Resources	7M
5	2020	AUTHIER	Lithium	Engineering Studies	0.5% GMR on part of Authier	Canada	Sayona Mining	210M
6	2022	ZONIA	Copper	Feasibility Study Underway	0.5% GRR & option to add 1% GRR on Zonia North	United States	World Copper	13M
7	2020	MONT SORCIER	Vanadium	Feasibility Study Underway	1% GMR on vanadium	Canada	Cerrado Gold	49M
8	2021	SEYMOUR LAKE	Lithium	Feasibility Study Underway	1.5% NSR	Canada	Green Technology Metals	14M
9	2020	BISSETT CREEK	Graphite	Preliminary Economic Assessment Complete	1.5% GRR	Canada	Northern Graphite	14M
10	2020	BATTERY HILL	Manganese	Preliminary Economic Assessment Complete	2% GMR	Canada	Manganese X Energy	17M

1. GRR: Gross Revenue Royalty
3. NSR: Net Smelter Royalty

2. GMR: Gross Metal Royalty
4. As of March 19, 2025. March 19, 2025 exchange rates used for market cap conversions to CAD (<https://ca.finance.yahoo.com/>)



ROYALTY PORTFOLIO

(LISTED BY DEVELOPMENT STAGE)

#	ACQUIRED	PROJECT	MINERAL	DEVELOPMENT STAGE	ROYALTY ^{1,2,3}	LOCATION	OPERATOR	MARKET CAP C\$ ⁴
11	2023	KENBRIDGE	Nickel-Copper	Preliminary Economic Assessment Complete	0.5% GRR & option to add 1% GRR on Kenbridge North	Canada	Tartisan Nickel	20M
12	2021	MILLENNIUM	Copper	Advanced Exploration	0.5% GRR	Australia	Metal Bank Limited	8M
13	2021	CANCET	Lithium	Advanced Exploration	1% NSR	Canada	Winsome Resources	61M
14	2021	RANA	Nickel	Advanced Exploration	1% NSR	Norway	Metals One Plc / Global Energy Metals / Kingsrose Mining	Private
15	2020	CHUBB	Lithium	Exploration	2% GMR	Canada	Burley Minerals	8M
16	2020	BOUVIER	Lithium	Exploration	2% GMR	Canada	Mining Equities Pty Ltd	Private
17	2020	SAYONA EAST	Lithium	Exploration	2% GMR	Canada	Sayona Mining	210M
18	2020	SAYONA WEST	Lithium	Exploration	0.5% GMR	Canada	Sayona Mining	210M
19	2021	GLASSVILLE	Manganese	Exploration	1% GRR	Canada	Globex Mining	89M
20	2022	SLEITAT	Tin-Silver	Exploration	1% NSR	United States	Cornish Metals	97M
21	2021	GRAPHITE BULL	Graphite	Exploration	0.75% GRR	Australia	Buxton Resources	8M
22	2021	MT. DOROTHY	Cobalt	Exploration	0.5% GRR	Australia	Hammer Metals	24M
23	2021	COBALT RIDGE	Cobalt	Exploration	0.5% GRR	Australia	Hammer Metals	24M

1. GRR: Gross Revenue Royalty
3. NSR: Net Smelter Royalty

2. GMR: Gross Metal Royalty

4. As of March 19, 2025. March 19, 2025 exchange rates used for market cap conversions to CAD (<https://ca.finance.yahoo.com/>)



ROYALTY PORTFOLIO

(LISTED BY DEVELOPMENT STAGE)

# ACQUIRED	PROJECT	MINERAL	DEVELOPMENT STAGE	ROYALTY ^{1,2,3}	LOCATION	OPERATOR	MARKET CAP C\$ ⁴	
24	2024	ROGERS CREEK / MCCLUSKEY	Lithium	Exploration	1.5% NSR	Canada	Maple Minerals (acquired by Cohiba Minerals)	Private
25	2024	BIG ROCK / OTTERTAIL RIVER SW	Lithium	Exploration	1.5% NSR	Canada	Maple Minerals (acquired by Cohiba Minerals)	Private
26	2024	OTTERTAIL / OTTERTAIL RIVER NE / MAHAMO	Lithium	Exploration	1.5% NSR	Canada	Maple Minerals (acquired by Cohiba Minerals)	Private
27	2024	GATHERING LAKE	Lithium	Exploration	1.5% NSR	Canada	Maple Minerals (acquired by Cohiba Minerals)	Private
28	2024	COSGRAVE	Lithium	Exploration	1.5% NSR	Canada	Linear Minerals	2M
29	2024	ALLISON LAKE	Lithium	Exploration	1.5% NSR	Canada	Musk Metals	1M
30	2024	JUBILEE, CAMPUS CREEK, CRESCENT	Lithium	Exploration	1.5% NSR	Canada	Electrification and Decarbonization AIE LP	Private
31	2024	ROOT BAY	Lithium	Exploration	1.5% NSR	Canada	Lithium Triangle Resources	Private
32	2024	BIRKETT	Lithium	Exploration	1.5% NSR	Canada	Portofino Resources	2M
33	2024	SEPARATION RAPIDS LITHIUM	Lithium	Exploration	1.0% NSR	Canada	Double O Seven Mining	Private
34	2024	ARREL	Lithium	Exploration	1.5% NSR	Canada	Private BC Company	Private
35	2024	OTATAKAN TOWNSHIP (50% OWNERSHIP)	Lithium	Exploration	3.0% NSR	Canada	Lithium One Metals	2M

1. GRR: Gross Revenue Royalty
3. NSR: Net Smelter Royalty

2. GMR: Gross Metal Royalty

4. As of March 19, 2025. March 19, 2025 exchange rates used for market cap conversions to CAD (<https://ca.finance.yahoo.com/>)



ROYALTY PORTFOLIO

(LISTED BY DEVELOPMENT STAGE)

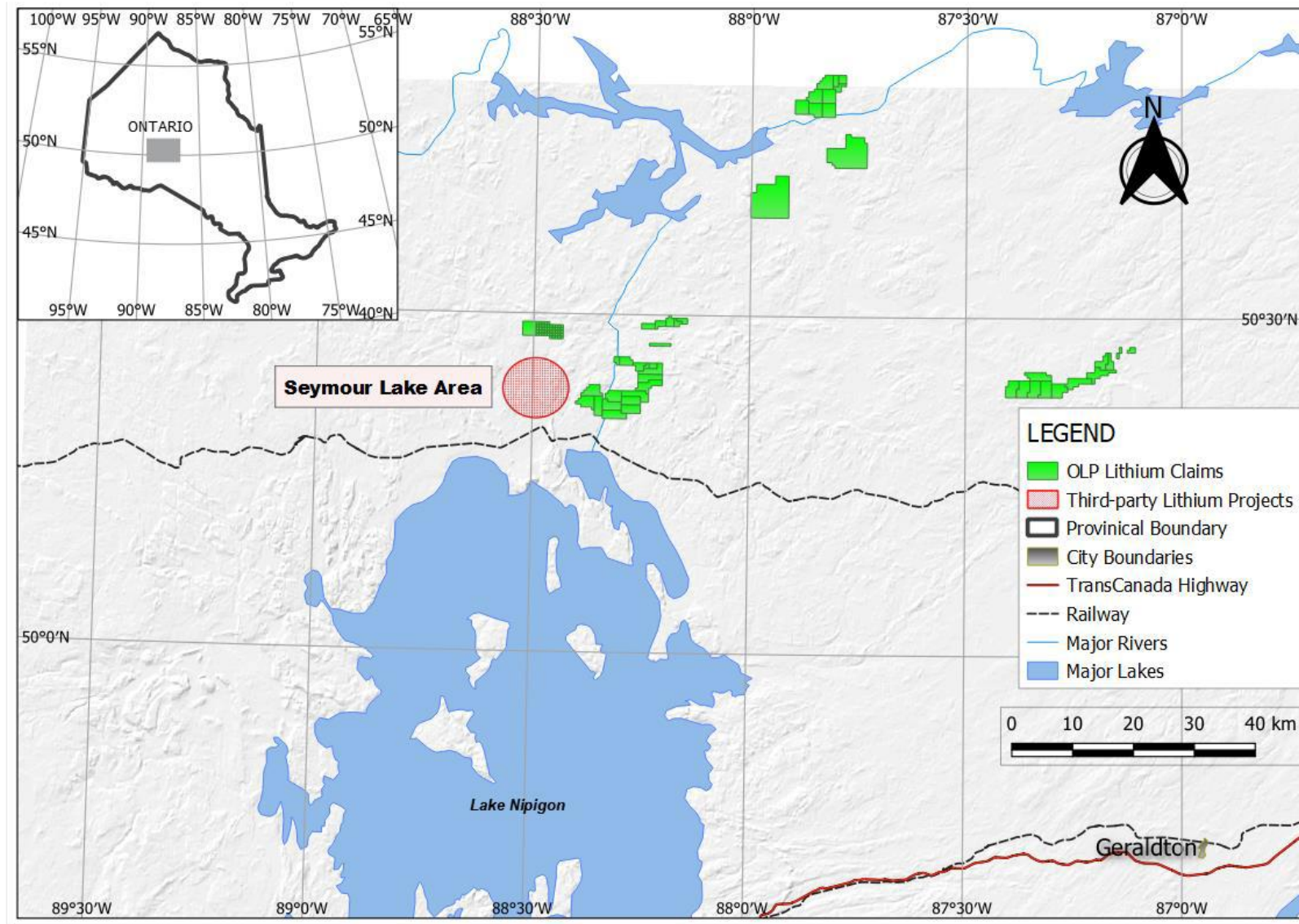
# ACQUIRED	PROJECT	MINERAL	DEVELOPMENT STAGE	ROYALTY ^{1,2,3}	LOCATION	OPERATOR	MARKET CAP C\$ ⁴
36	2024 LAURI	Lithium	Exploration	1.5% NSR	Canada	Fifty St George	Private
37	2024 KEMBER / PAKEAGEAMA	Lithium	Exploration	1.5% NSR	Canada	Sultan Resources	1M
38	2024 ALLISON LAKE / RUDDY	Lithium	Exploration	1.5% NSR	Canada	Sultan Resources	1M
39	2024 PEGGY LITHIUM	Lithium	Exploration	1.5% NSR	Canada	Lithos Minerals	Private
40	2024 MARGOT LITHIUM	Lithium	Exploration	1.5% NSR	Canada	Private BC Company	Private
41	2024 BARBARA LAKE	Lithium	Exploration	1.5% NSR	Canada	Private BC Company	Private
42	2024 ALLISON LAKE NORTH & SOUTH	Lithium	Exploration	1.5% NSR	Canada	Green Technology Metals	14M
43	2024 ROOT BAY / ROOT LAKE	Lithium	Exploration	1.5% NSR	Canada	Xplore Resources Corp.	1M

1. GRR: Gross Revenue Royalty
3. NSR: Net Smelter Royalty

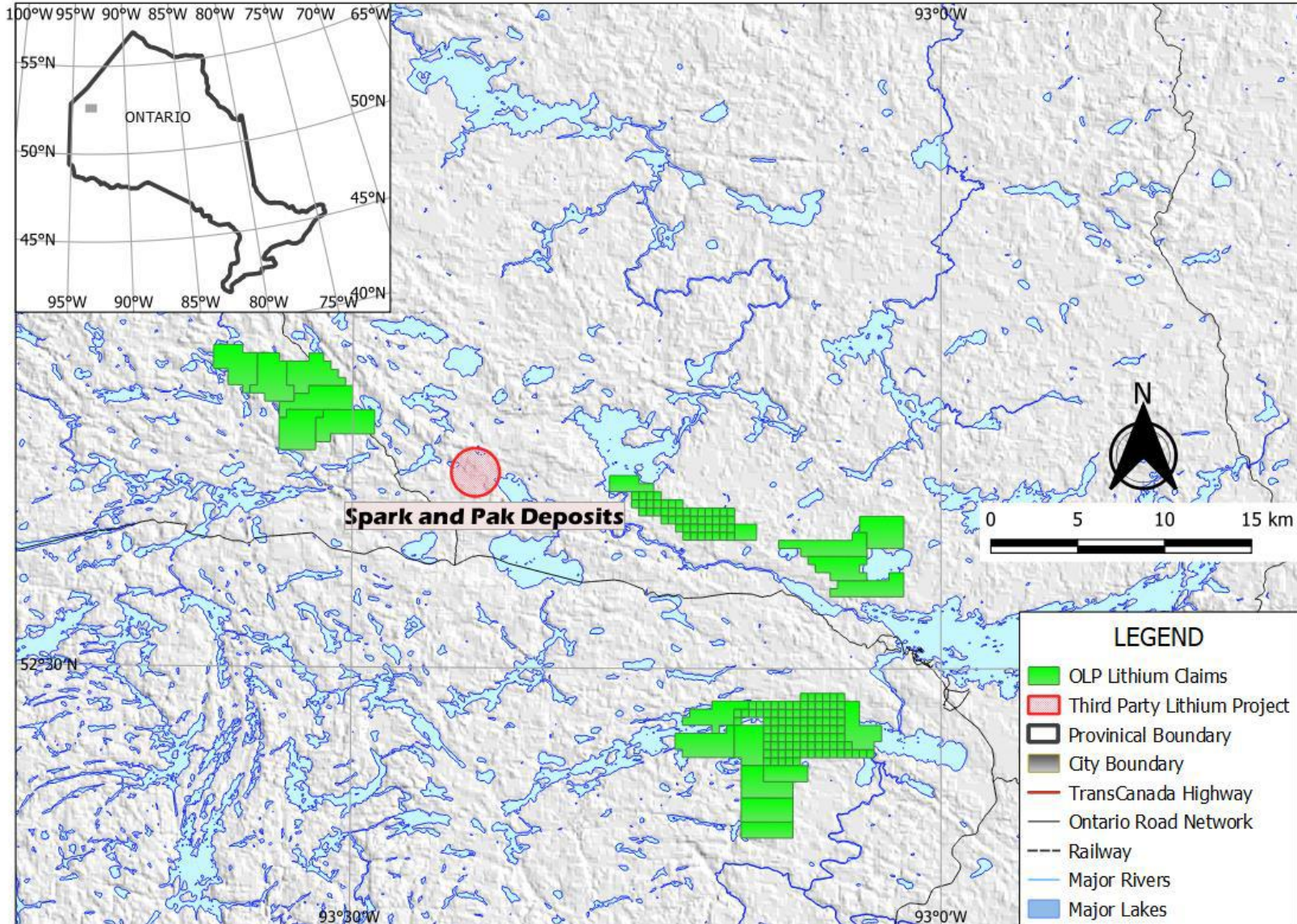
2. GMR: Gross Metal Royalty
4. As of March 19, 2025. March 19, 2025 exchange rates used for market cap conversions to CAD (<https://ca.finance.yahoo.com/>)



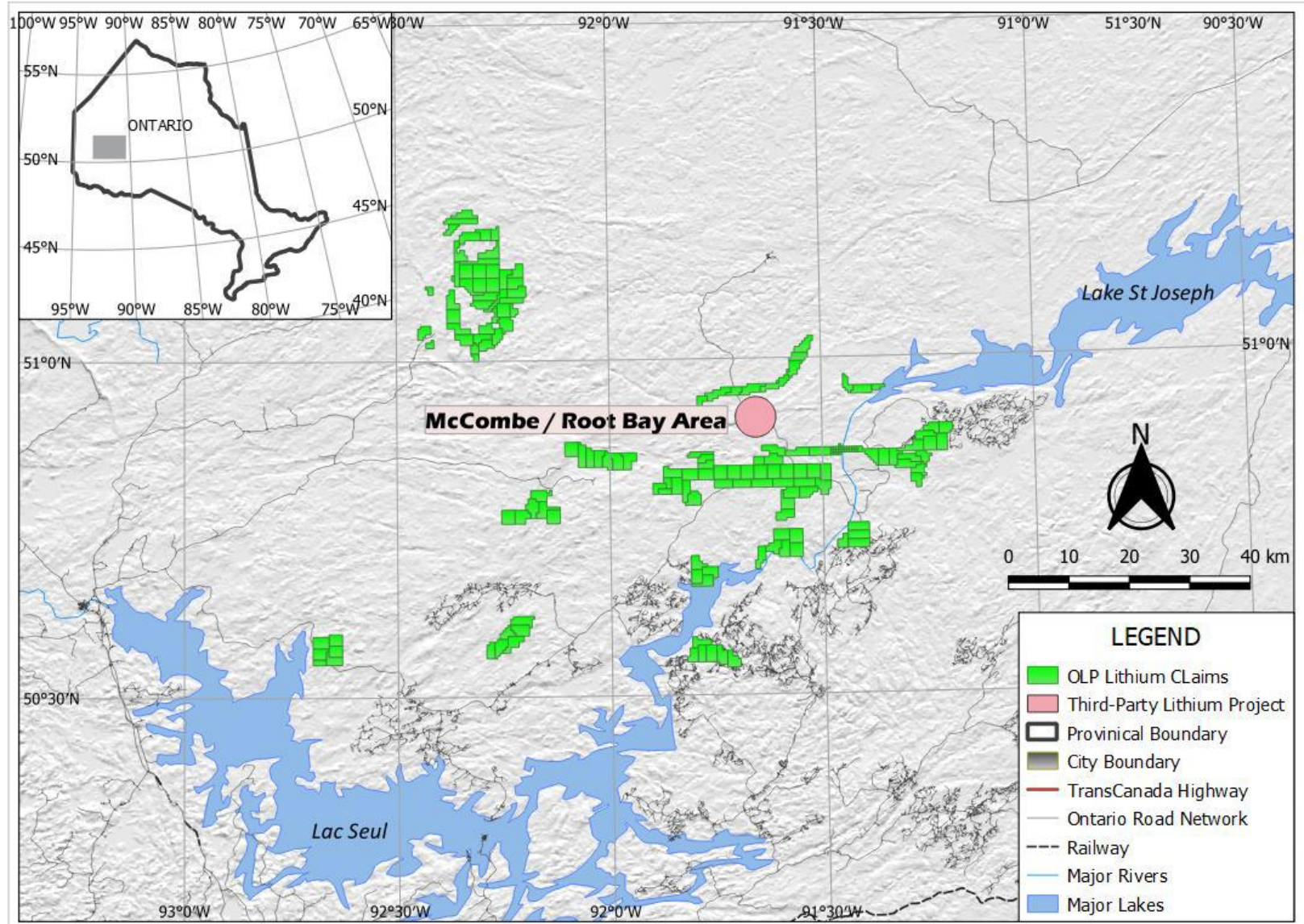
ONTARIO LITHIUM PROJECTS IN THE SEYMOUR LAKE AREA



ONTARIO LITHIUM PROJECTS IN VICINITY OF FRONTIER LITHIUM'S SPARK AND PAK DEPOSITS



ONTARIO LITHIUM PROJECTS IN THE ROOT BAY AREA



ONTARIO LITHIUM PROJECTS IN VICINITY OF GEORGIA LAKE PROJECTS

